

# SA REIT. ASSOCIATION

## MONTHLY CHART BOOK FEBRUARY 2020

Performance table: SA REITs, Equities and Bonds .....	2
Total return indexes .....	3
SA REITs Index (price only) .....	4
Comparative Total Return Investment Correlation .....	5
SA REITs quarterly return components .....	6
Monthly performance .....	7
3 month performance .....	8
Year-to-date performance .....	9
12 month performance .....	10
3 year performance .....	11
5 year performance .....	12
10 year performance .....	13
SA REIT yields vs Long Bond yields .....	14
Yield differential and average yield differential .....	15
Distribution growth .....	16
Market capitalisation .....	17
Market capitalisation (publicly traded SA REITs) .....	18
Monthly value of SA REIT units traded .....	19

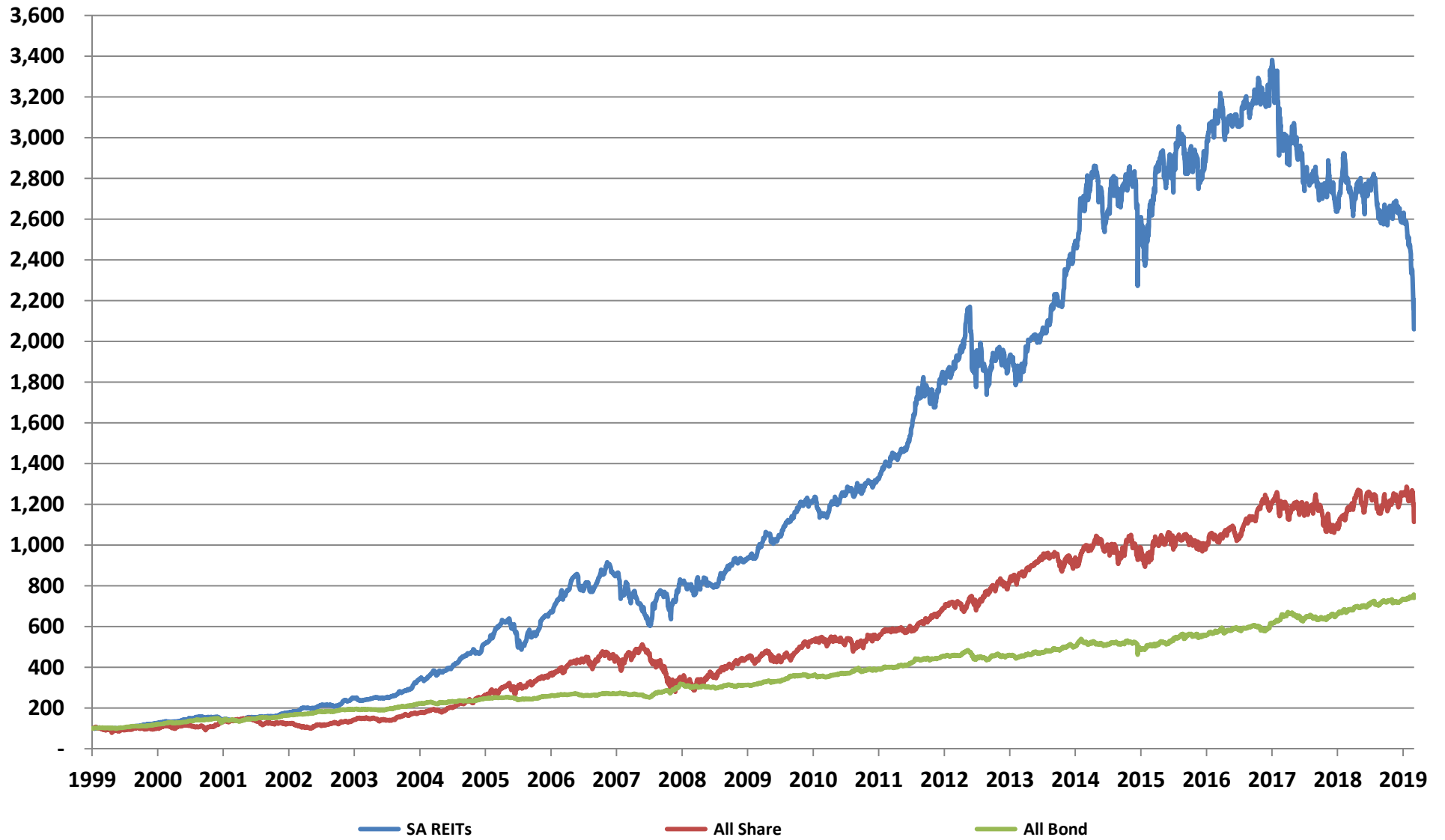
## PERFORMANCE

Period	SA REITs <sup>1</sup>	All Share <sup>2</sup>	All Bond <sup>2</sup>
<b>2009</b>			
Q1	-1.1%	-4.2%	-5.1%
Q2	-0.8%	8.6%	0.3%
Q3	12.9%	13.9%	3.0%
Q4	4.2%	11.4%	1.1%
<b>Year</b>	<b>15.4%</b>	<b>32.1%</b>	<b>-1.0%</b>
<b>2010</b>			
Q1	9.8%	4.5%	4.4%
Q2	1.1%	-8.2%	1.1%
Q3	13.5%	13.3%	8.0%
Q4	3.2%	9.5%	0.7%
<b>Year</b>	<b>29.9%</b>	<b>19.0%</b>	<b>15.0%</b>
<b>2011</b>			
Q1	-2.0%	1.1%	-1.6%
Q2	4.9%	-0.6%	3.9%
Q3	2.3%	-5.8%	2.8%
Q4	3.3%	8.4%	3.5%
<b>Year</b>	<b>8.6%</b>	<b>2.6%</b>	<b>8.8%</b>
<b>2012</b>			
Q1	8.1%	6.0%	2.4%
Q2	10.1%	1.0%	5.2%
Q3	11.3%	7.3%	5.0%
Q4	2.9%	10.3%	2.6%
<b>Year</b>	<b>36.3%</b>	<b>26.7%</b>	<b>16.0%</b>
<b>2013</b>			
Q1	8.5%	2.5%	0.9%
Q2	-0.2%	-0.2%	-2.3%
Q3	-2.1%	12.5%	1.9%
Q4	1.0%	5.5%	0.1%
<b>Year</b>	<b>7.2%</b>	<b>21.4%</b>	<b>0.6%</b>
<b>2014</b>			
Q1	1.5%	4.3%	0.9%
Q2	5.1%	7.2%	2.5%
Q3	6.3%	-2.1%	2.2%
Q4	12.6%	1.4%	4.2%
<b>Year</b>	<b>27.7%</b>	<b>10.9%</b>	<b>10.1%</b>
<b>2015</b>			
Q1	14.6%	5.8%	3.0%
Q2	-6.7%	-0.2%	-1.4%
Q3	4.6%	-2.1%	1.1%
Q4	-5.9%	1.7%	-6.4%
<b>Year</b>	<b>5.2%</b>	<b>5.1%</b>	<b>-3.9%</b>
<b>2016</b>			
Q1	10.3%	3.9%	6.6%
Q2	1.5%	0.4%	4.4%
Q3	0.4%	0.5%	3.4%
Q4	2.1%	-2.1%	0.3%
<b>Year</b>	<b>14.7%</b>	<b>2.6%</b>	<b>15.4%</b>
<b>2017</b>			
Q1	3.8%	3.8%	2.5%
Q2	-1.3%	-0.4%	1.5%
Q3	3.8%	8.9%	3.7%
Q4	6.7%	7.4%	2.2%
<b>Year</b>	<b>13.5%</b>	<b>21.0%</b>	<b>10.2%</b>
<b>2018</b>			
Q1	-14.5%	-6.0%	8.1%
Q2	-3.0%	4.5%	-3.8%
Q3	-1.7%	-2.2%	0.8%
Q4	-2.9%	-4.9%	2.8%
<b>Year</b>	<b>-20.8%</b>	<b>-8.5%</b>	<b>7.7%</b>
<b>2019</b>			
Q1	-0.3%	8.0%	3.8%
Q2	3.6%	3.9%	3.7%
Q3	-6.4%	-4.6%	0.8%
Q4	0.7%	4.6%	1.7%
<b>Year</b>	<b>-2.6%</b>	<b>12.0%</b>	<b>10.3%</b>
<b>2020</b>			
January	-4.2%	-1.7%	1.2%
February	-17.6%	-9.0%	-0.1%
<b>Year-to-date</b>	<b>-21.1%</b>	<b>-10.5%</b>	<b>1.1%</b>

1) Source = Bridge Fund Managers (index excludes property developers and non-SA REITs)

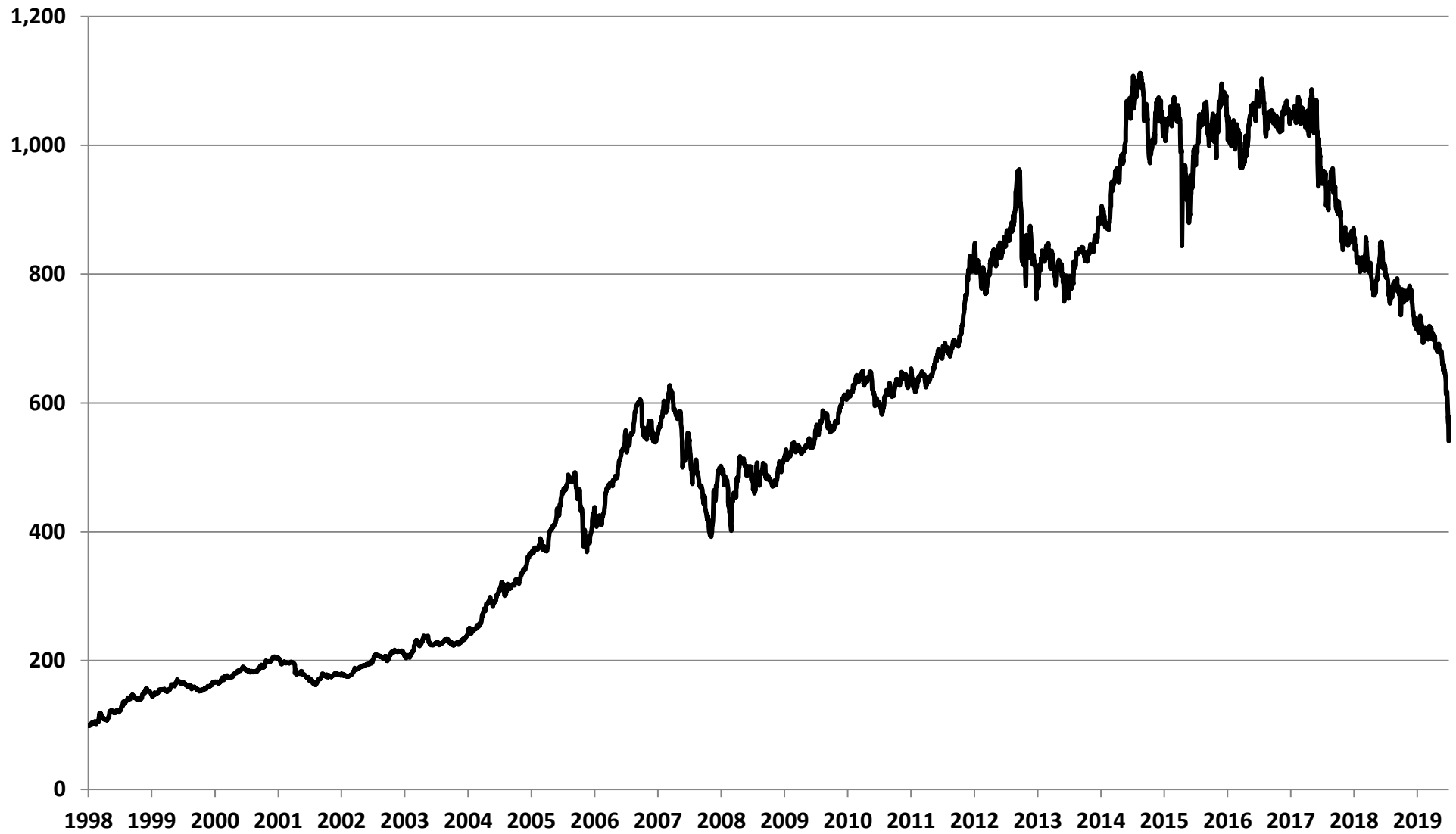
2) Source = IRESS

# Total return indexes



Source: IRESS & Bridge Fund Managers

### SA REIT Index (price only)



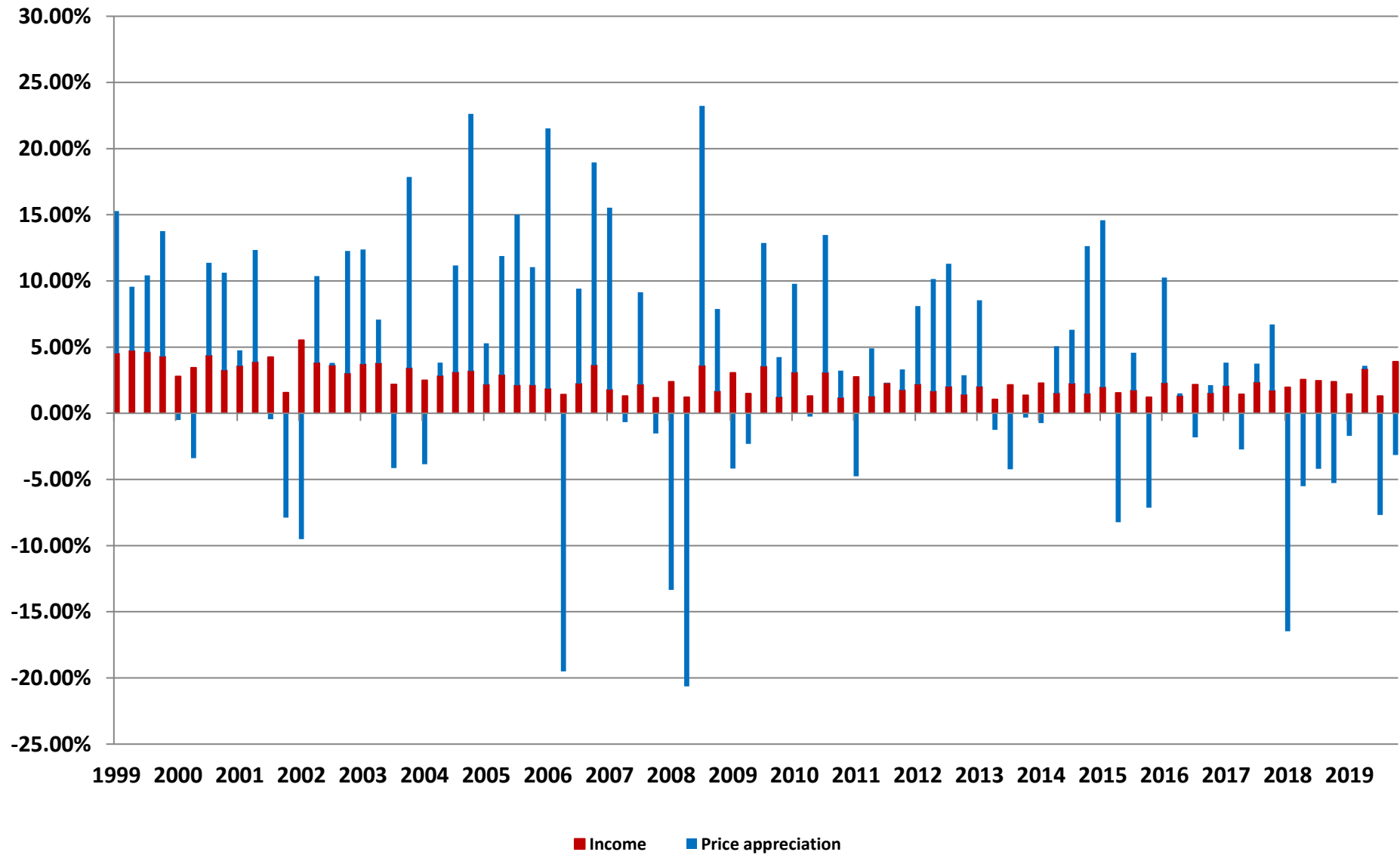
Source: IRESS & Bridge Fund Managers

## Comparative Total Return Investment Correlation

	SA REITs	FTSE/JSE: All Share	All Bond	FTSE/JSE: Financials	FTSE/JSE: Industrials	FTSE/JSE: Top 40	FTSE/JSE: Small Cap
Data period for upper right : February 2010 - February 2020							
<b>SA REITs</b>	1.00	0.33	0.52	0.59	0.50	0.22	0.58
<b>FTSE/JSE: All Share</b>	0.48	1.00	0.14	0.65	0.63	0.91	0.58
<b>All Bond</b>	0.33	0.04	1.00	0.40	0.36	0.08	0.29
<b>FTSE/JSE: Financials</b>	0.63	0.60	0.33	1.00	0.84	0.69	0.72
<b>FTSE/JSE: Industrials</b>	0.59	0.55	0.35	0.83	1.00	0.66	0.71
<b>FTSE/JSE: Top 40</b>	0.35	0.91	0.01	0.64	0.59	1.00	0.54
<b>FTSE/JSE: Small Cap</b>	0.64	0.53	0.25	0.69	0.66	0.48	1.00
Data period for lower left : February 2015 - February 2020							

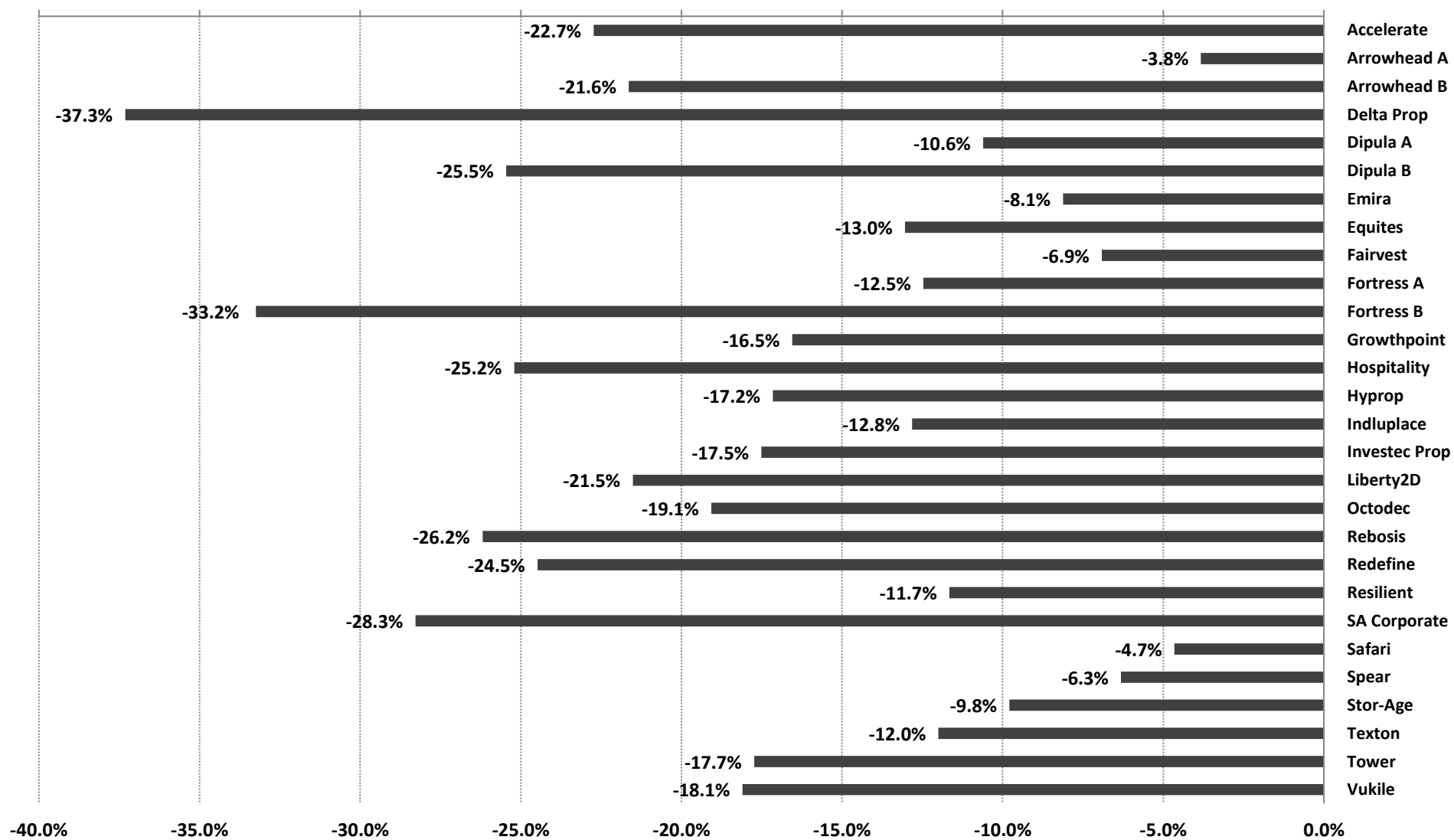
Source: Bridge Fund Managers

# SA REITs - quarterly return components



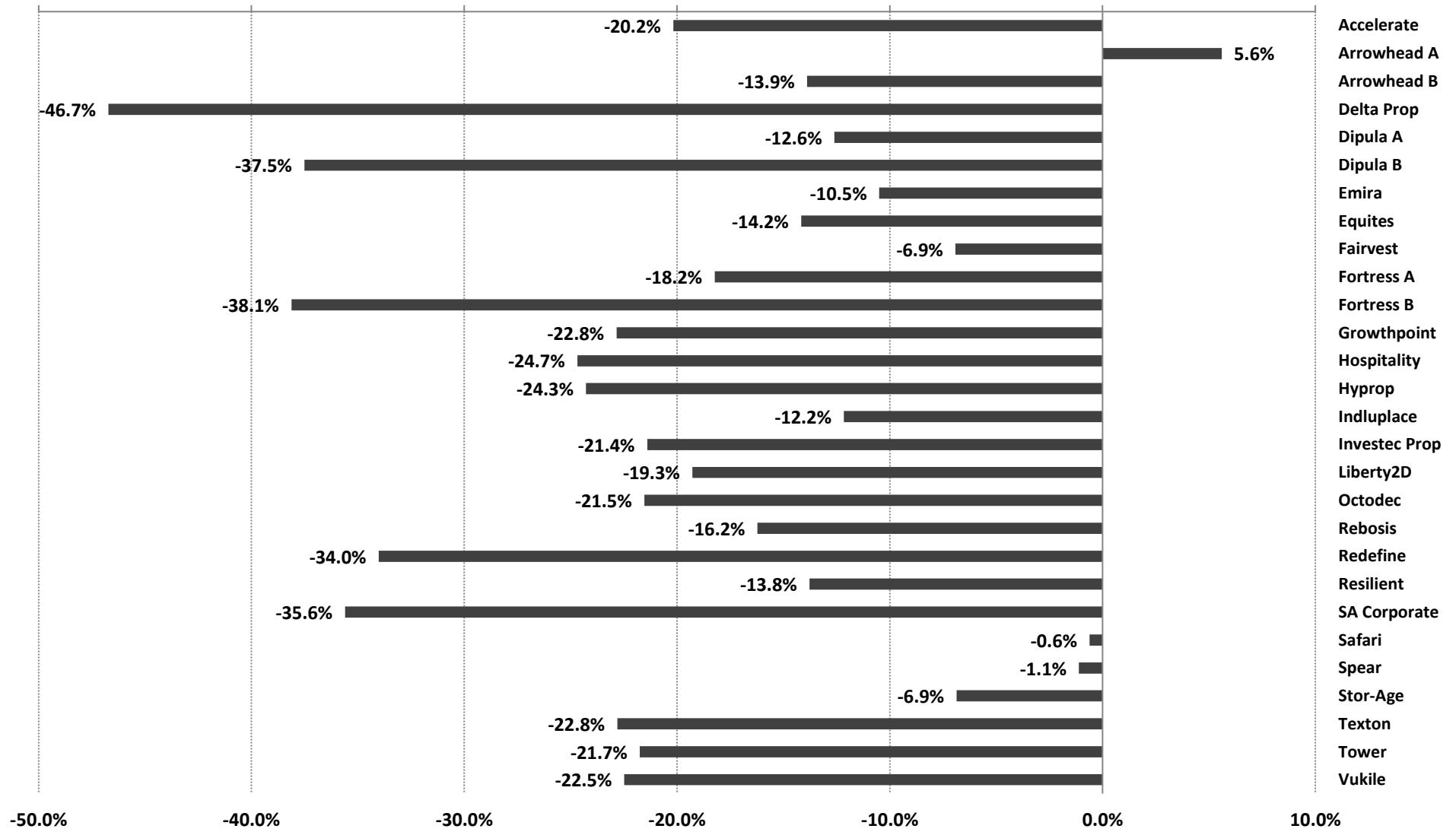
Source: Bridge Fund Managers

## Monthly performance - February 2020



Source: Bridge Fund Managers

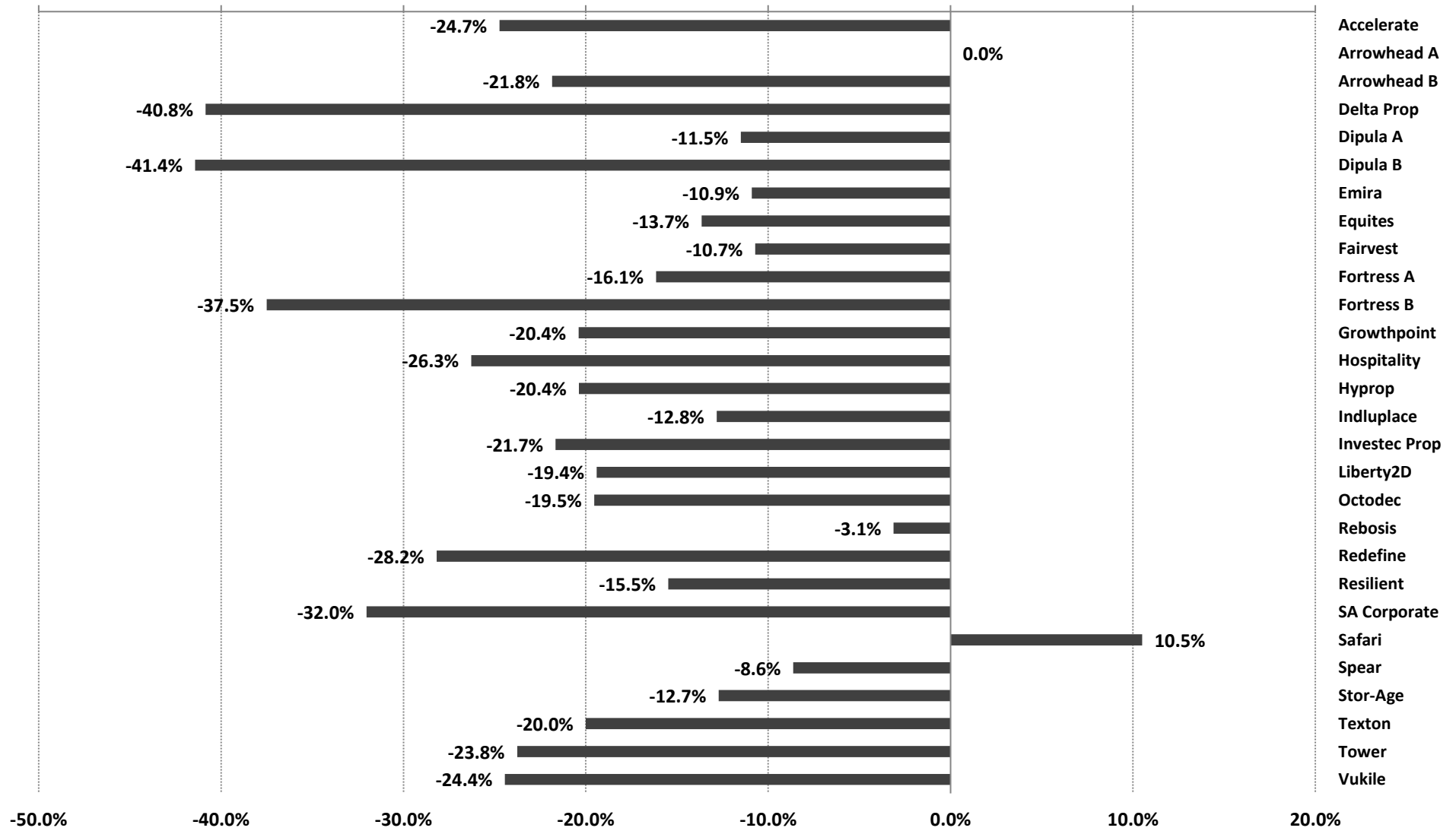
### 3 month performance to 29 February 2020



Source: Bridge Fund Managers

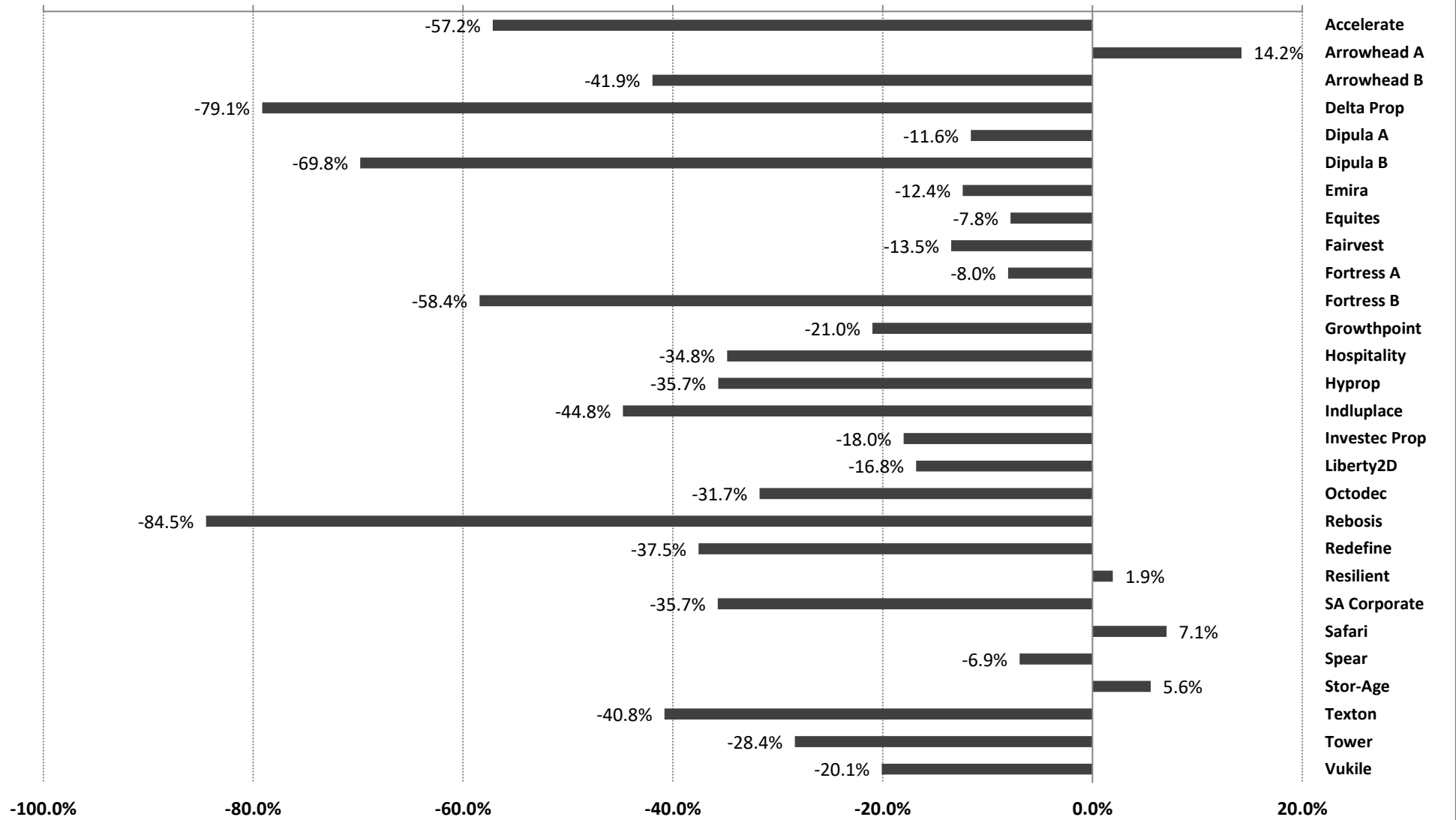


## Year-to-date performance to 29 February 2020



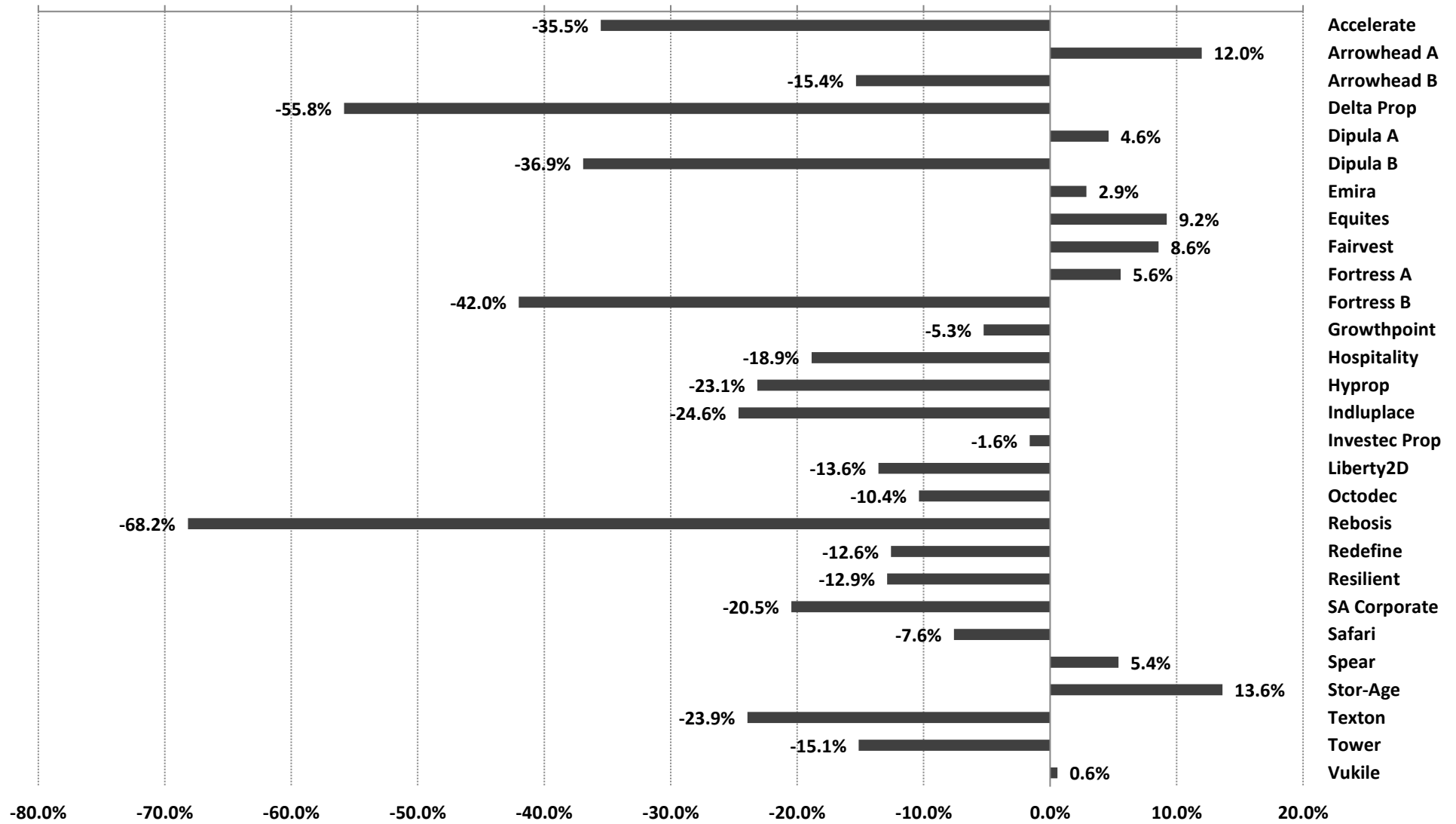
Source: Bridge Fund Managers

## 12 month performance to 29 February 2020



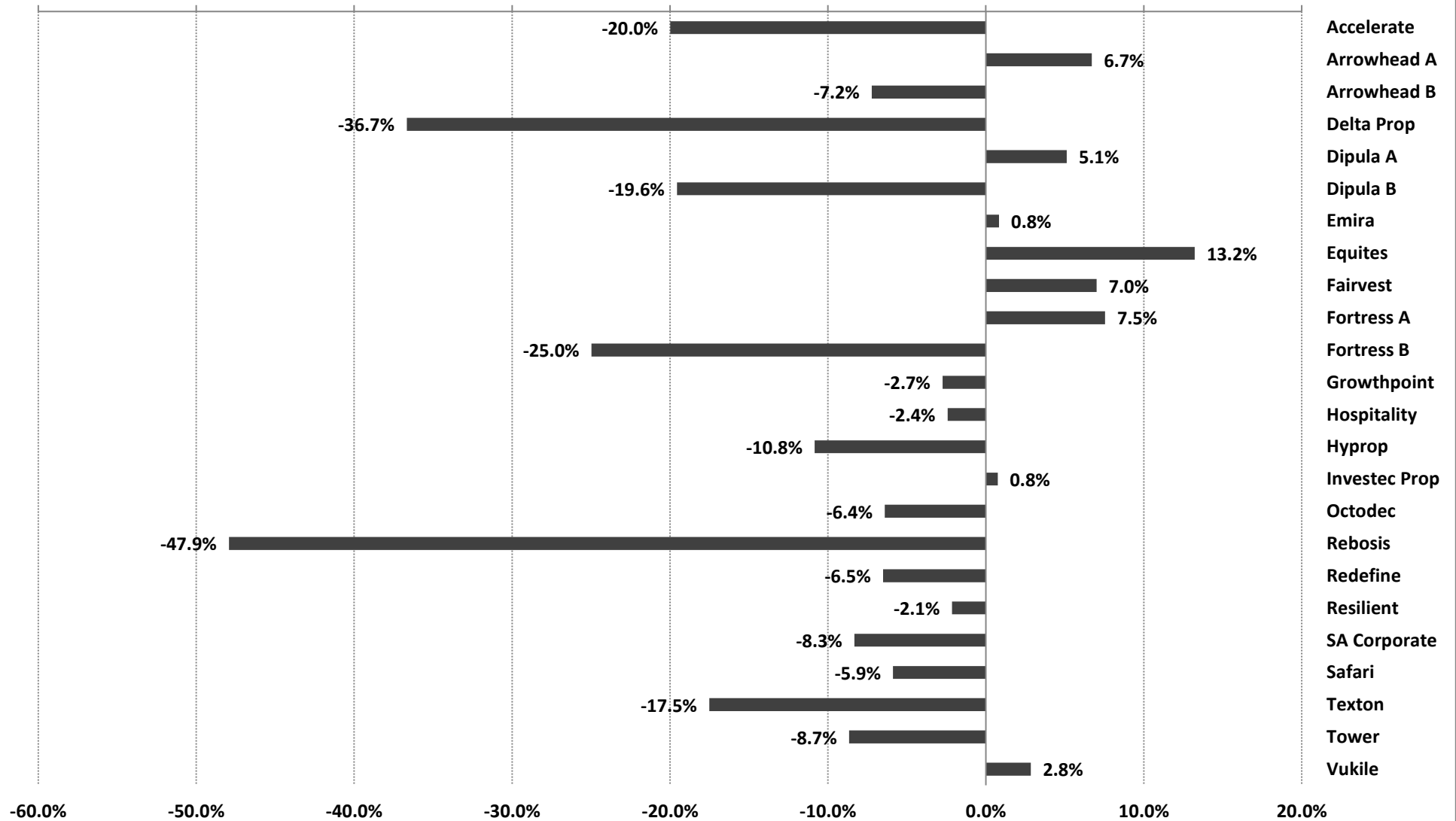
Source: Bridge Fund Managers

### 3 year annualised performance to 29 February 2020



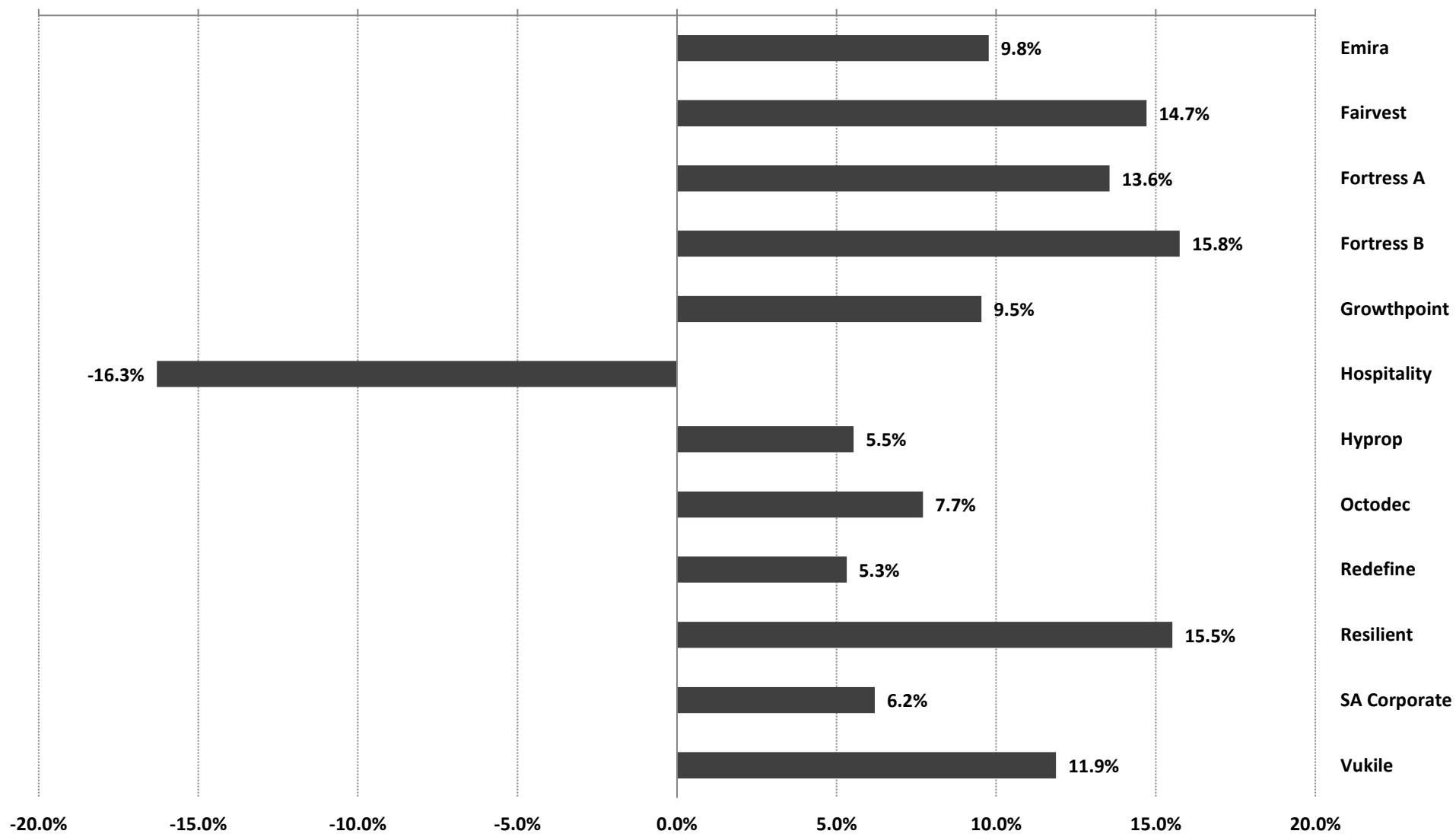
Source: Bridge Fund Managers

## 5 year annualised performance 29 February 2020



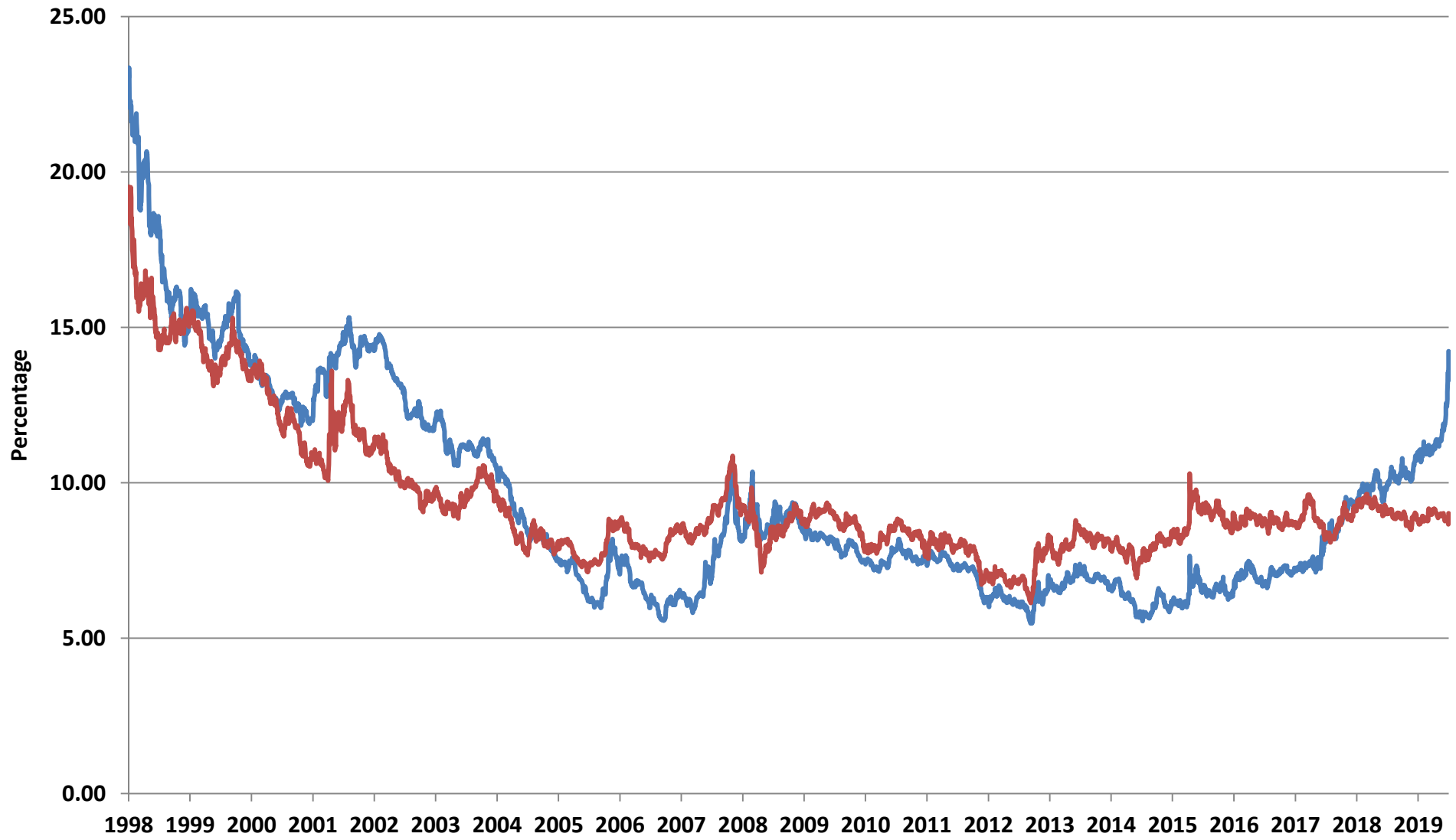
Source: Bridge Fund Managers

## 10 year annualised performance to 29 February 2020



Source: Bridge Fund Managers

## SA REIT Yields versus Bond Yields

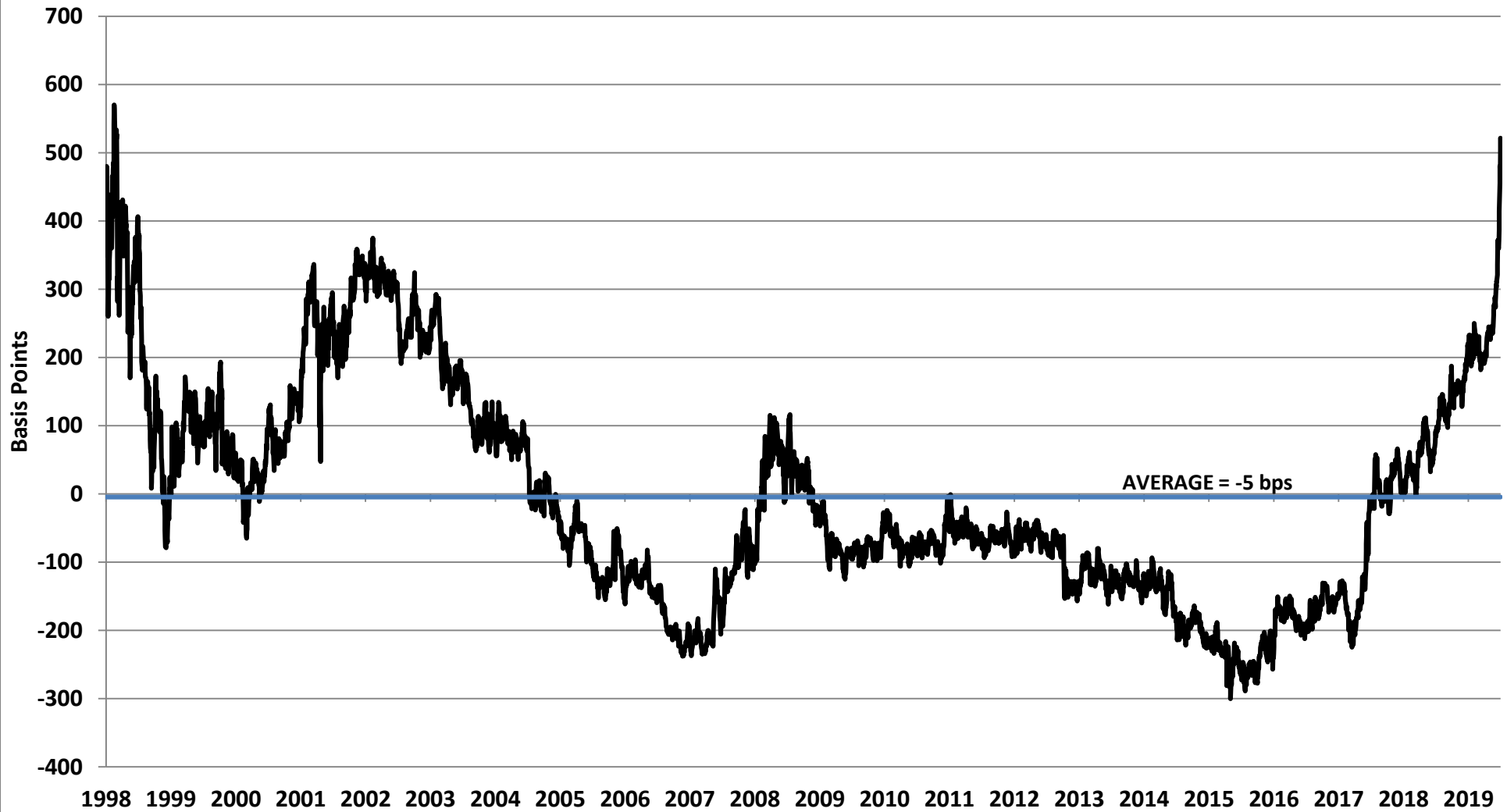


Source: IRESS & Bridge Fund Managers

— SA Listed Property — Long bond

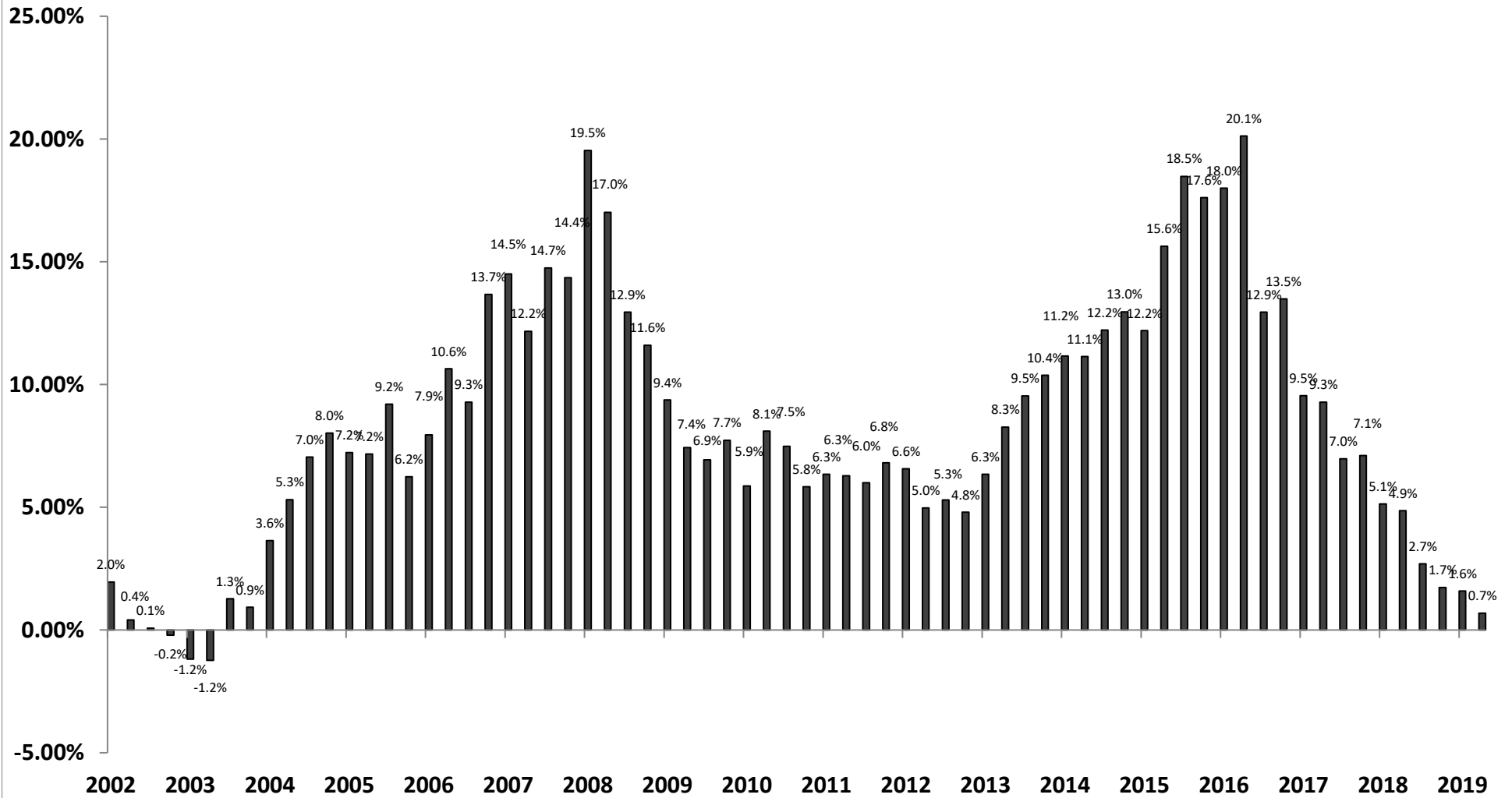
# Yield Differential

## SA REIT Yield minus Long Bond Yield



Source: IRESS & Bridge Fund Managers

## SA REITs Distribution Growth - Rolling 12 months<sup>1</sup>

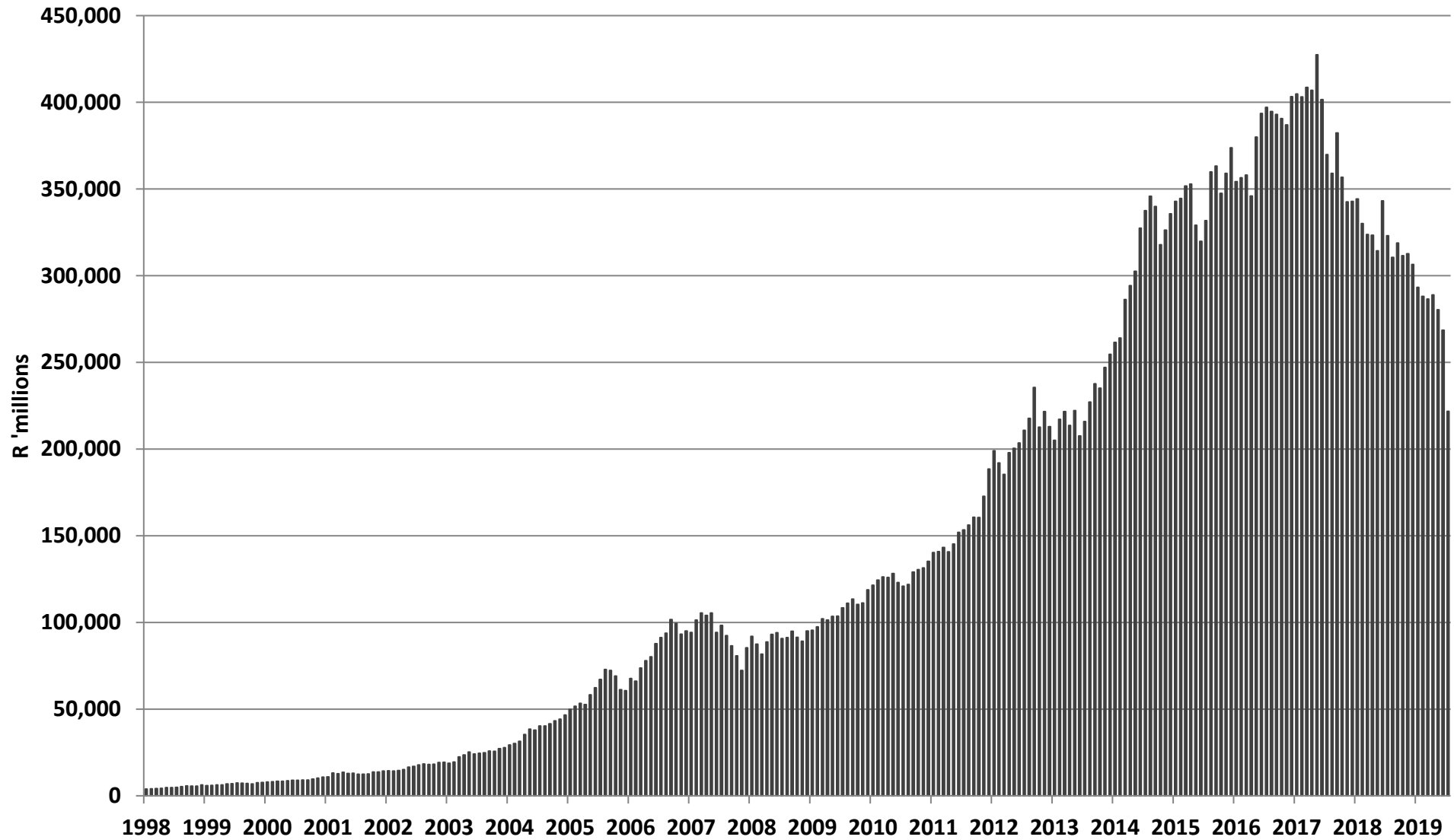


Source: Bridge Fund Managers

1. Weighted by equity market capitalisation at the end of the period to limit distortions created by significant equity issuance by individual companies

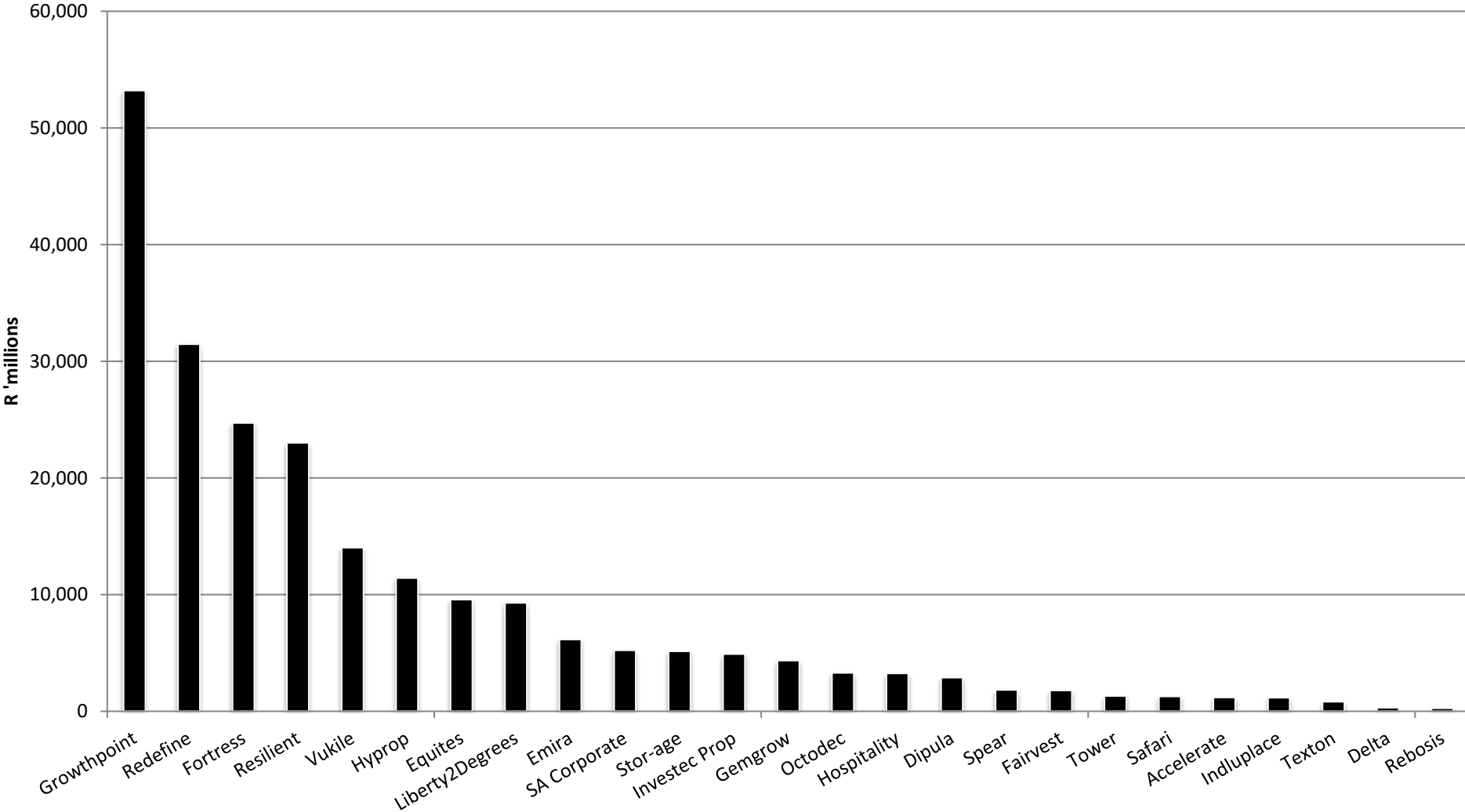


# Market Capitalisation



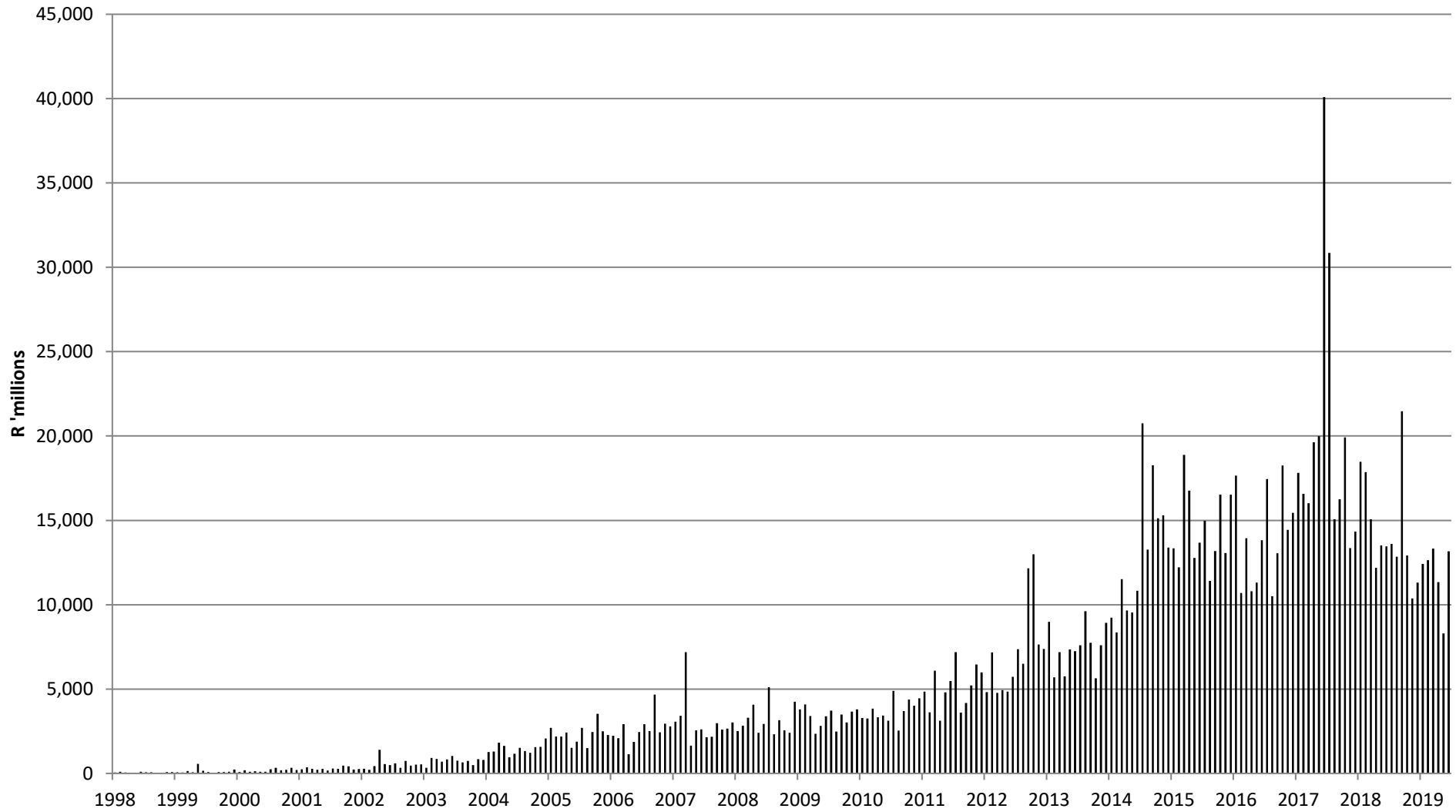
Source: Bridge Fund Managers

## Market Capitalisation - Publicly Traded SA REITs February 2020



Source: Bridge Fund Managers

# Monthly value of SA REIT units traded



Source: IRESS and Bridge Fund Managers