

# SA REIT. ASSOCIATION

## MONTHLY CHART BOOK NOVEMBER 2021

Performance table: SA REITs, Equities and Bonds .....	2
Total return indexes .....	3
SA REITs Index (price only) .....	4
Comparative Total Return Investment Correlation .....	5
SA REITs quarterly return components .....	6
Monthly performance .....	7
3 month performance .....	8
Year-to-date performance .....	9
12 month performance .....	10
3 year performance .....	11
5 year performance .....	12
10 year performance .....	13
SA REIT yields vs Long Bond yields .....	14
Yield differential and average yield differential .....	15
Distribution growth .....	16
Market capitalisation .....	17
Market capitalisation (publicly traded SA REITs) .....	18
Monthly value of SA REIT units traded .....	19

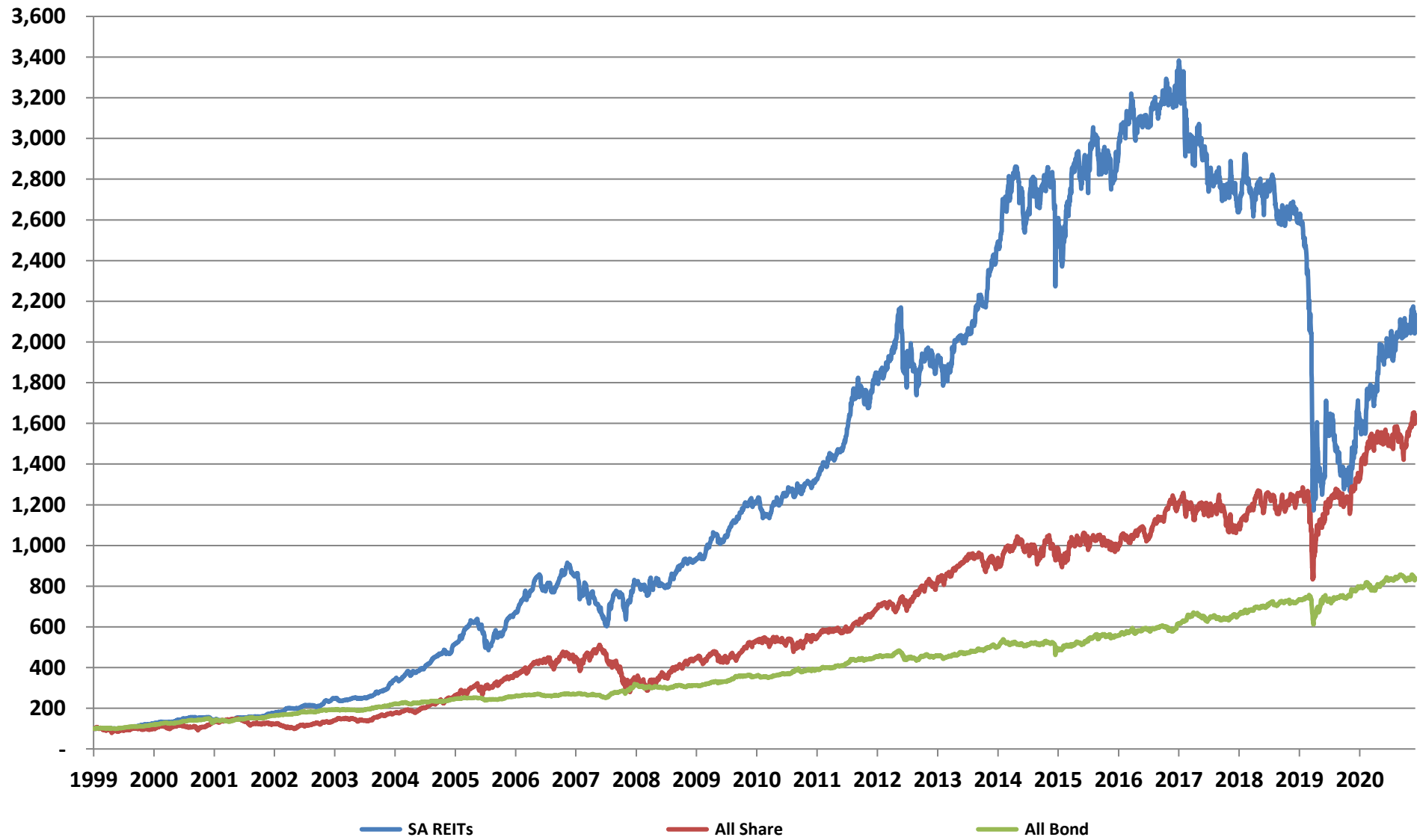
## PERFORMANCE

Period	SA REITs <sup>1</sup>	All Share <sup>2</sup>	All Bond <sup>2</sup>
<b>2011</b>			
Q1	-2.0%	1.1%	-1.6%
Q2	4.9%	-0.6%	3.9%
Q3	2.3%	-5.8%	2.8%
Q4	3.3%	8.4%	3.5%
Year	8.6%	2.6%	8.8%
<b>2012</b>			
Q1	8.1%	6.0%	2.4%
Q2	10.1%	1.0%	5.2%
Q3	11.3%	7.3%	5.0%
Q4	2.9%	10.3%	2.6%
Year	36.3%	26.7%	16.0%
<b>2013</b>			
Q1	8.5%	2.5%	0.9%
Q2	-0.2%	-0.2%	-2.3%
Q3	-2.1%	12.5%	1.9%
Q4	1.0%	5.5%	0.1%
Year	7.2%	21.4%	0.6%
<b>2014</b>			
Q1	1.5%	4.3%	0.9%
Q2	5.1%	7.2%	2.5%
Q3	6.3%	-2.1%	2.2%
Q4	12.6%	1.4%	4.2%
Year	27.7%	10.9%	10.1%
<b>2015</b>			
Q1	14.6%	5.8%	3.0%
Q2	-6.7%	-0.2%	-1.4%
Q3	4.6%	-2.1%	1.1%
Q4	-5.9%	1.7%	-6.4%
Year	5.2%	5.1%	-3.9%
<b>2016</b>			
Q1	10.3%	3.9%	6.6%
Q2	1.5%	0.4%	4.4%
Q3	0.4%	0.5%	3.4%
Q4	2.1%	-2.1%	0.3%
Year	14.7%	2.6%	15.4%
<b>2017</b>			
Q1	3.8%	3.8%	2.5%
Q2	-1.3%	-0.4%	1.5%
Q3	3.8%	8.9%	3.7%
Q4	6.7%	7.4%	2.2%
Year	13.5%	21.0%	10.2%
<b>2018</b>			
Q1	-14.5%	-6.0%	8.1%
Q2	-3.0%	4.5%	-3.8%
Q3	-1.7%	-2.2%	0.8%
Q4	-2.9%	-4.9%	2.8%
Year	-20.8%	-8.5%	7.7%
<b>2019</b>			
Q1	-0.3%	8.0%	3.8%
Q2	3.6%	3.9%	3.7%
Q3	-6.4%	-4.6%	0.8%
Q4	0.7%	4.6%	1.7%
Year	-2.6%	12.0%	10.3%
<b>2020</b>			
Q1	-50.3%	-21.4%	-8.7%
Q2	18.9%	23.2%	9.9%
Q3	-11.9%	0.7%	1.5%
Q4	19.4%	9.8%	6.7%
Year	-37.9%	7.0%	8.7%
<b>2021</b>			
January	-3.5%	5.2%	0.7%
February	11.0%	5.9%	0.1%
March	0.1%	1.6%	-2.5%
April	13.8%	1.0%	1.9%
May	-2.5%	1.6%	3.7%
June	3.0%	-2.4%	1.1%
July	-1.1%	4.2%	0.8%
August	7.5%	-1.7%	1.7%
September	-1.1%	-3.1%	-2.1%
October	-1.9%	5.2%	-0.5%
November	3.8%	4.5%	0.7%
Year-to-date	31.3%	23.3%	5.6%

1) Source = Counterpoint Asset Management (index excludes property developers and non-SA REITs)

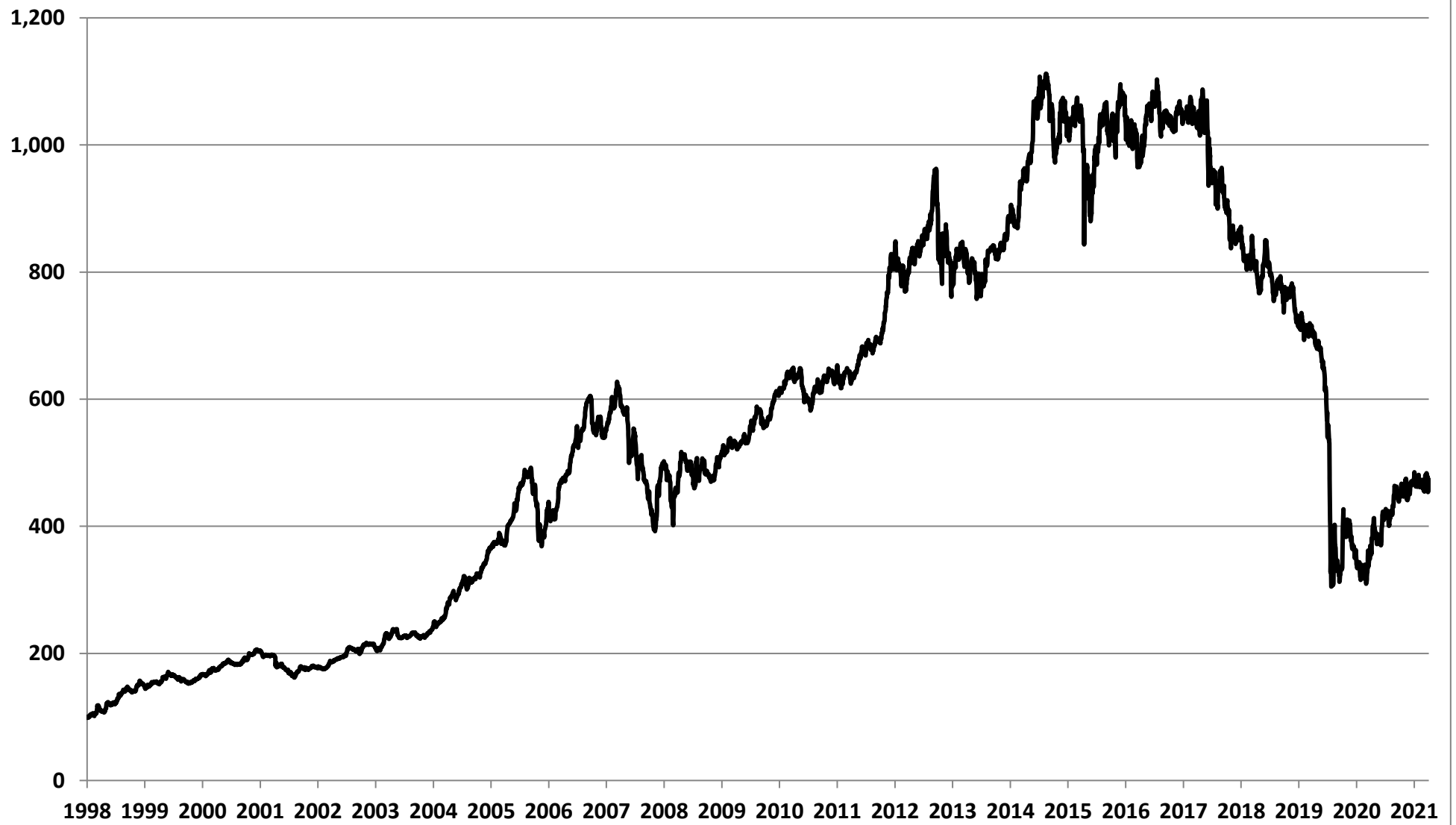
2) Source = IRESS

## Total return indexes



Source: IRESS & Counterpoint Asset Management

### SA REIT Index (price only)



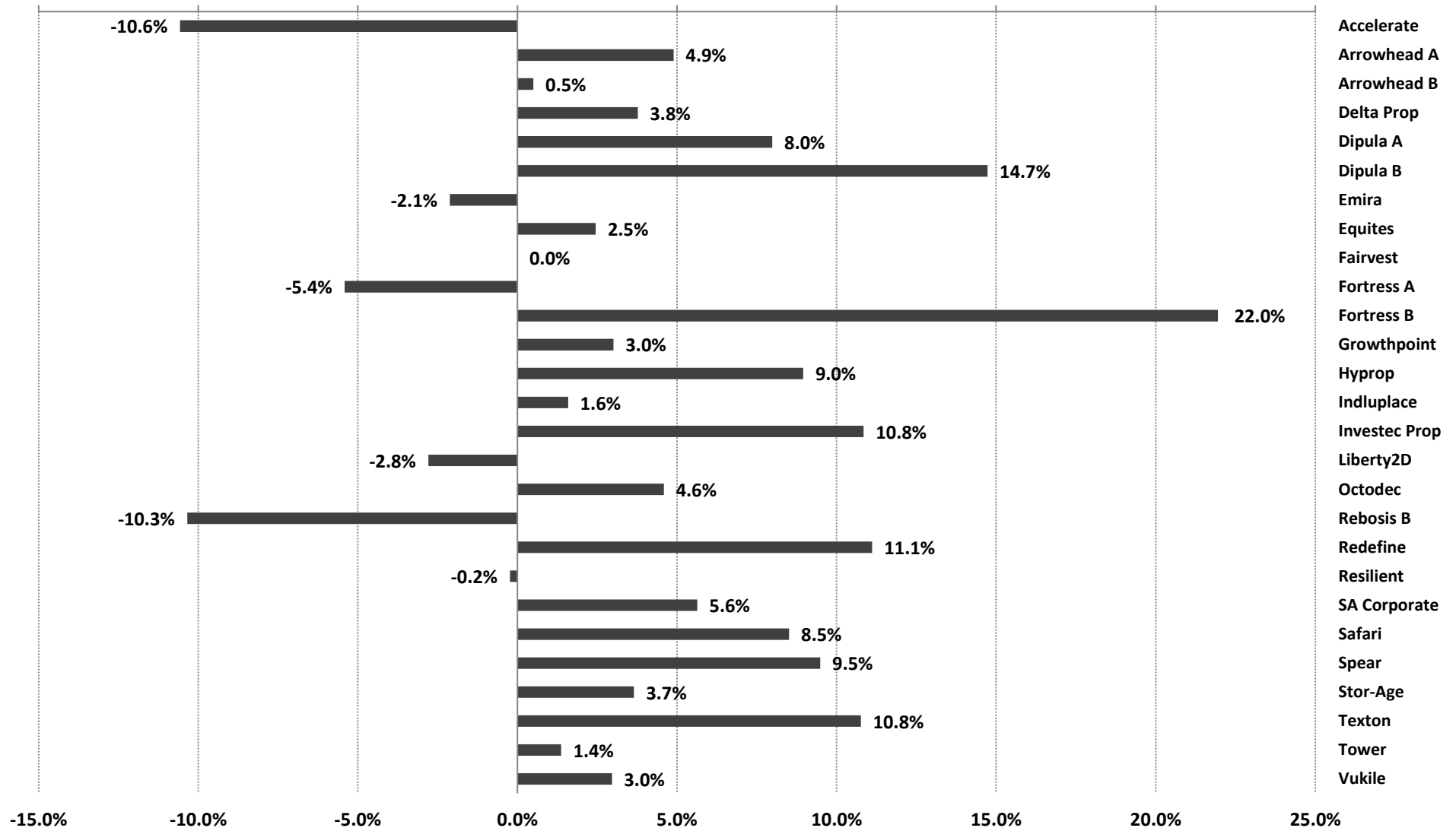
Source: IRESS & Counterpoint Asset Management

## Comparative Total Return Investment Correlation

	SA REITs	FTSE/JSE: All Share	All Bond	FTSE/JSE: Financials	FTSE/JSE: Industrials	FTSE/JSE: Top 40	FTSE/JSE: Small Cap
Data period for upper right : November 2011 - November 2021							
<b>SA REITs</b>	1.00	0.48	0.52	0.72	0.62	0.42	0.74
<b>FTSE/JSE: All Share</b>	0.63	1.00	0.23	0.65	0.67	0.94	0.66
<b>All Bond</b>	0.47	0.31	1.00	0.53	0.50	0.23	0.38
<b>FTSE/JSE: Financials</b>	0.76	0.64	0.62	1.00	0.85	0.68	0.81
<b>FTSE/JSE: Industrials</b>	0.69	0.68	0.57	0.85	1.00	0.71	0.76
<b>FTSE/JSE: Top 40</b>	0.58	0.94	0.38	0.69	0.73	1.00	0.63
<b>FTSE/JSE: Small Cap</b>	0.81	0.69	0.41	0.83	0.79	0.67	1.00
Data period for lower left : November 2016 - November 2021							

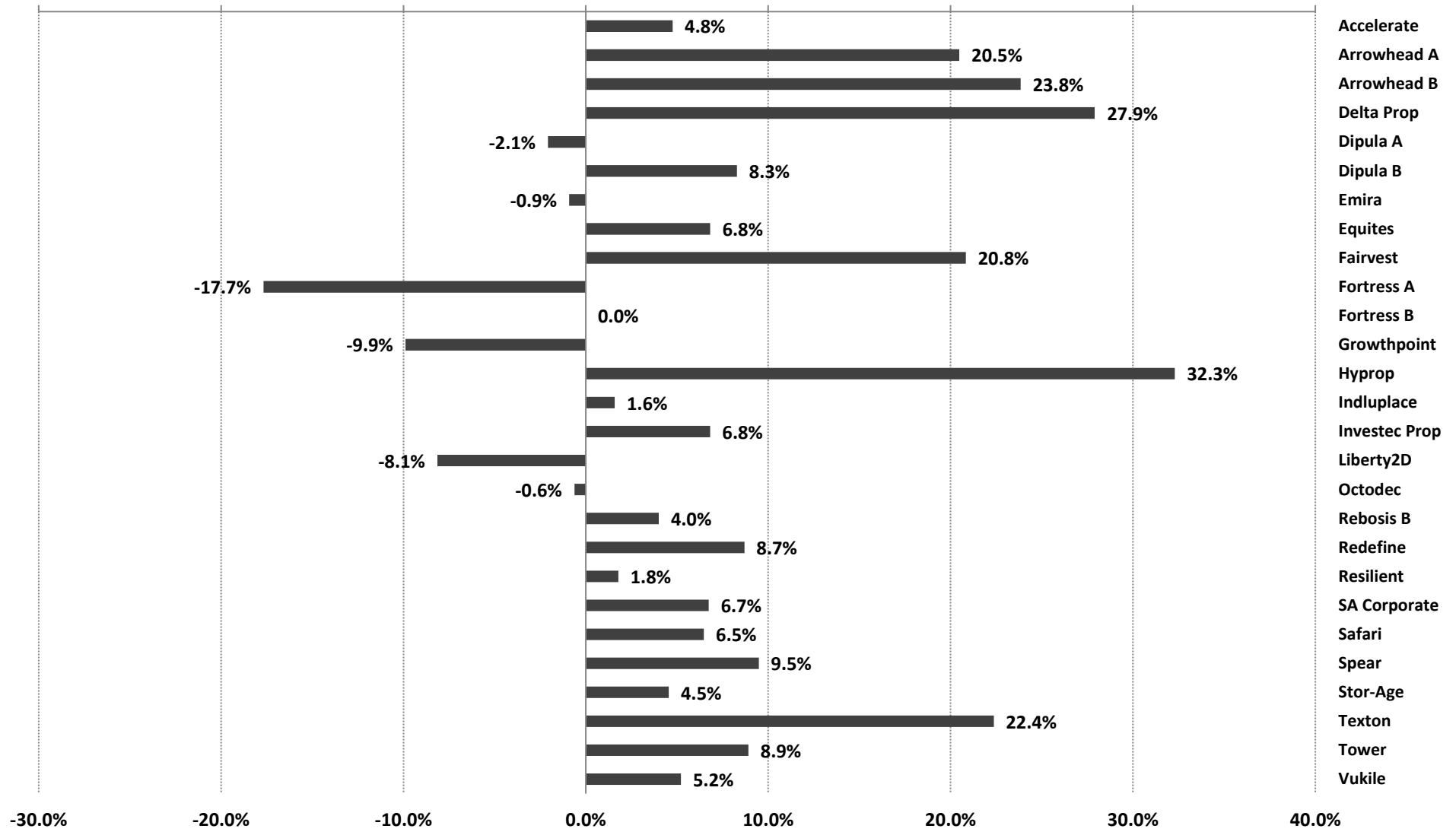
Source: Counterpoint Asset Management

## Monthly performance - November 2021



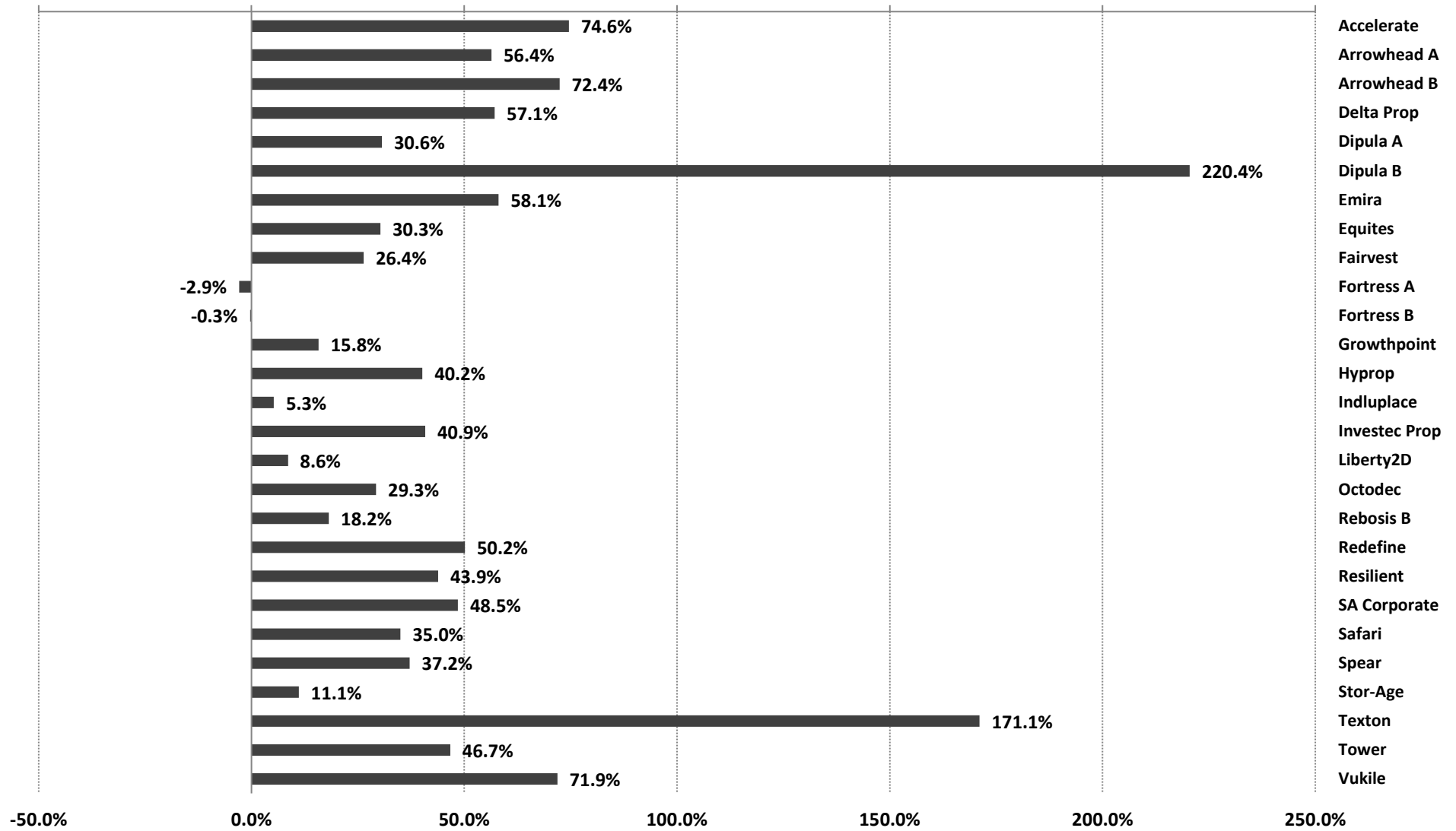
Source: Counterpoint Asset Management

### 3 month performance to 30 November 2021



Source: Counterpoint Asset Management

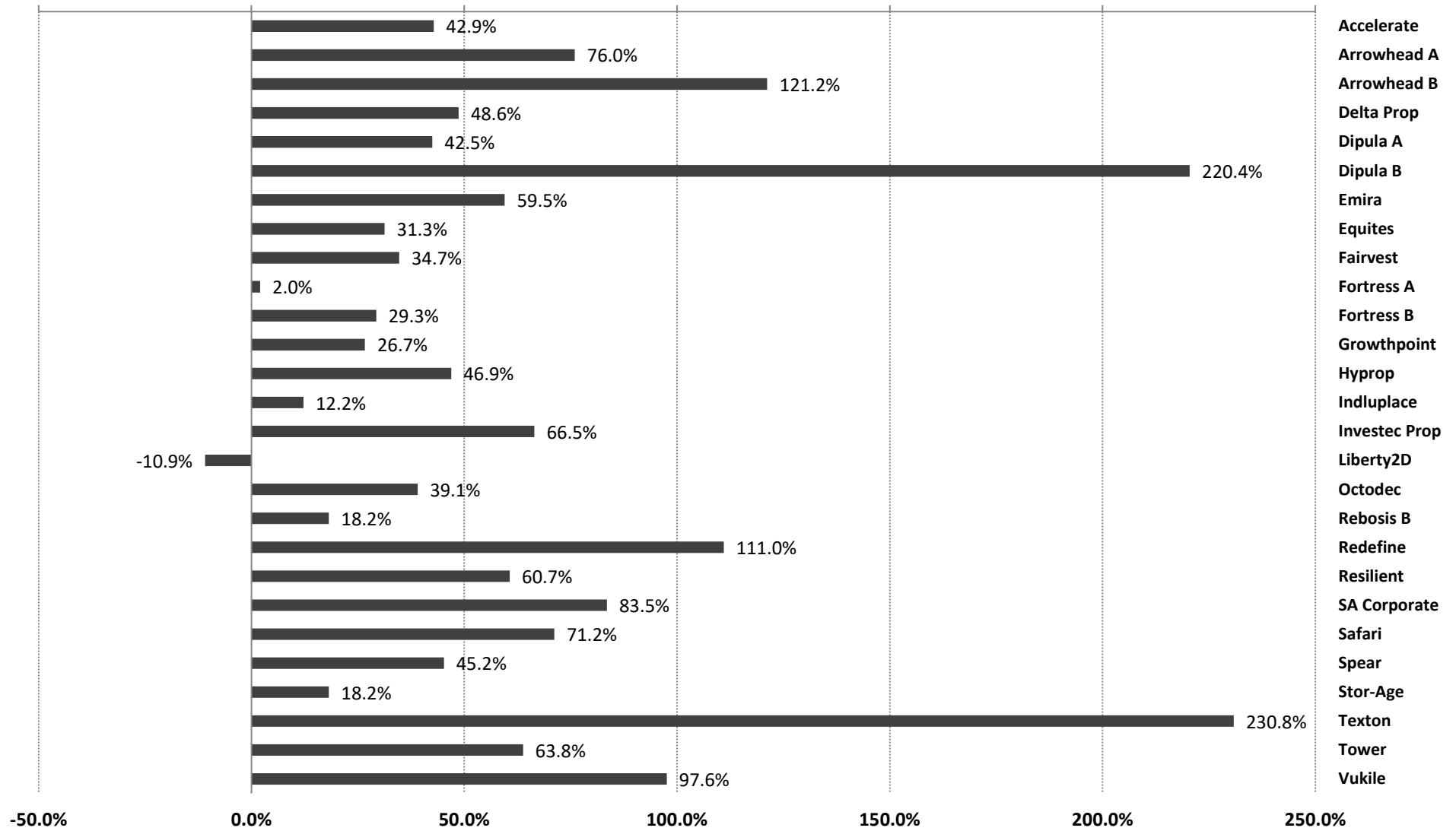
## Year-to-date performance to 30 November 2021



Source: Counterpoint Asset Management

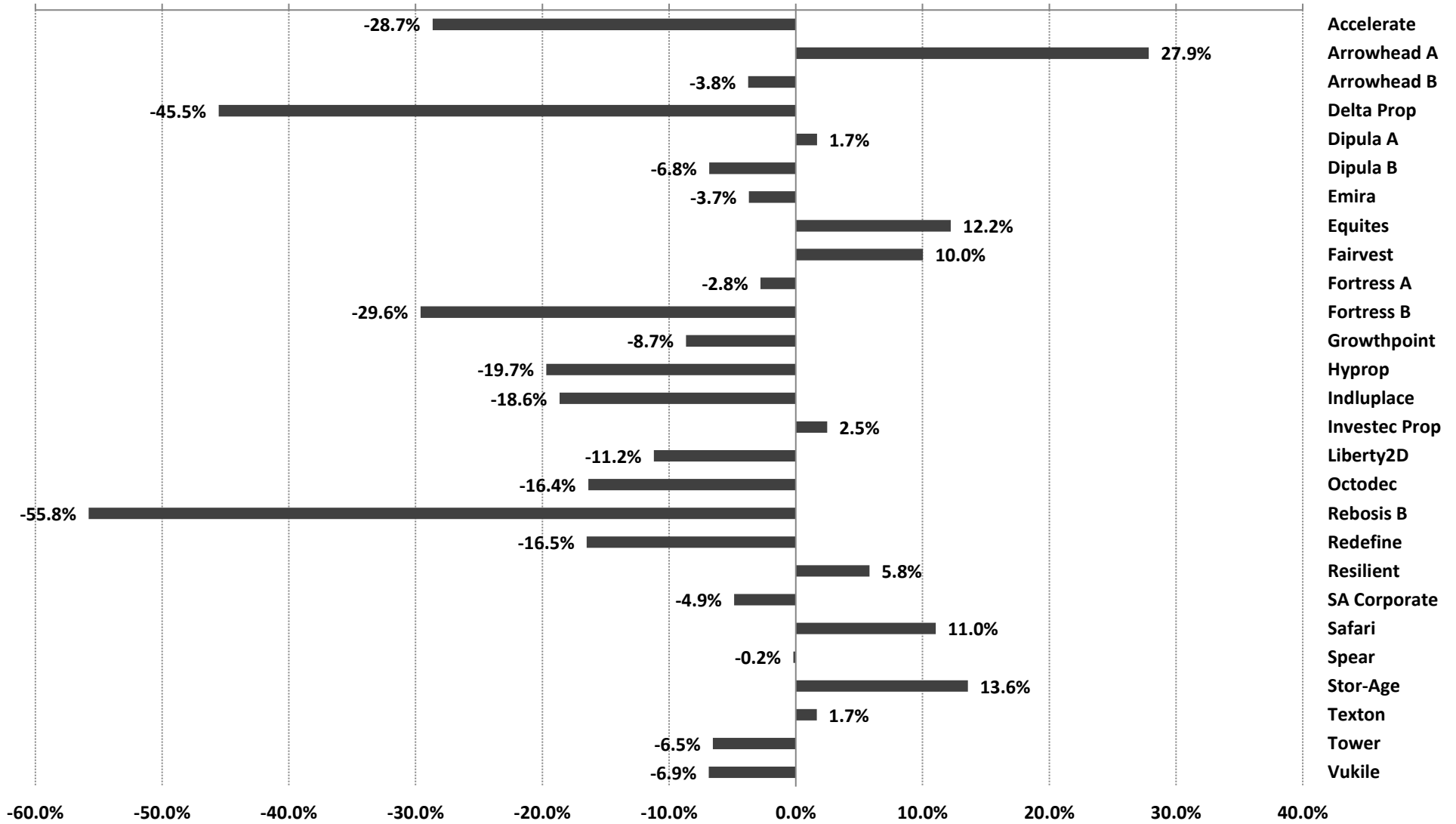


## 12 month performance to 30 November 2021



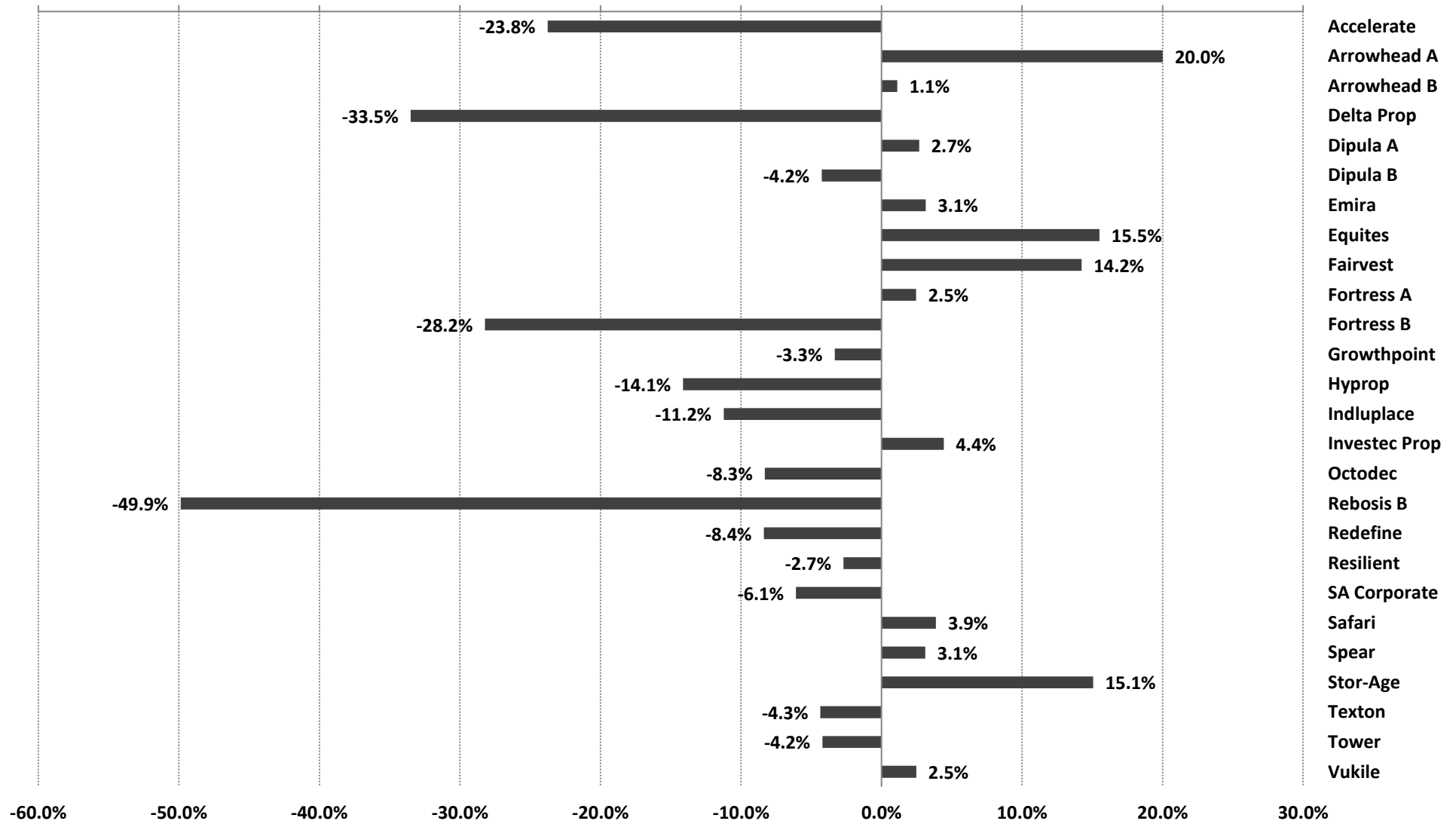
Source: Counterpoint Asset Management

### 3 year annualised performance to 30 November 2021



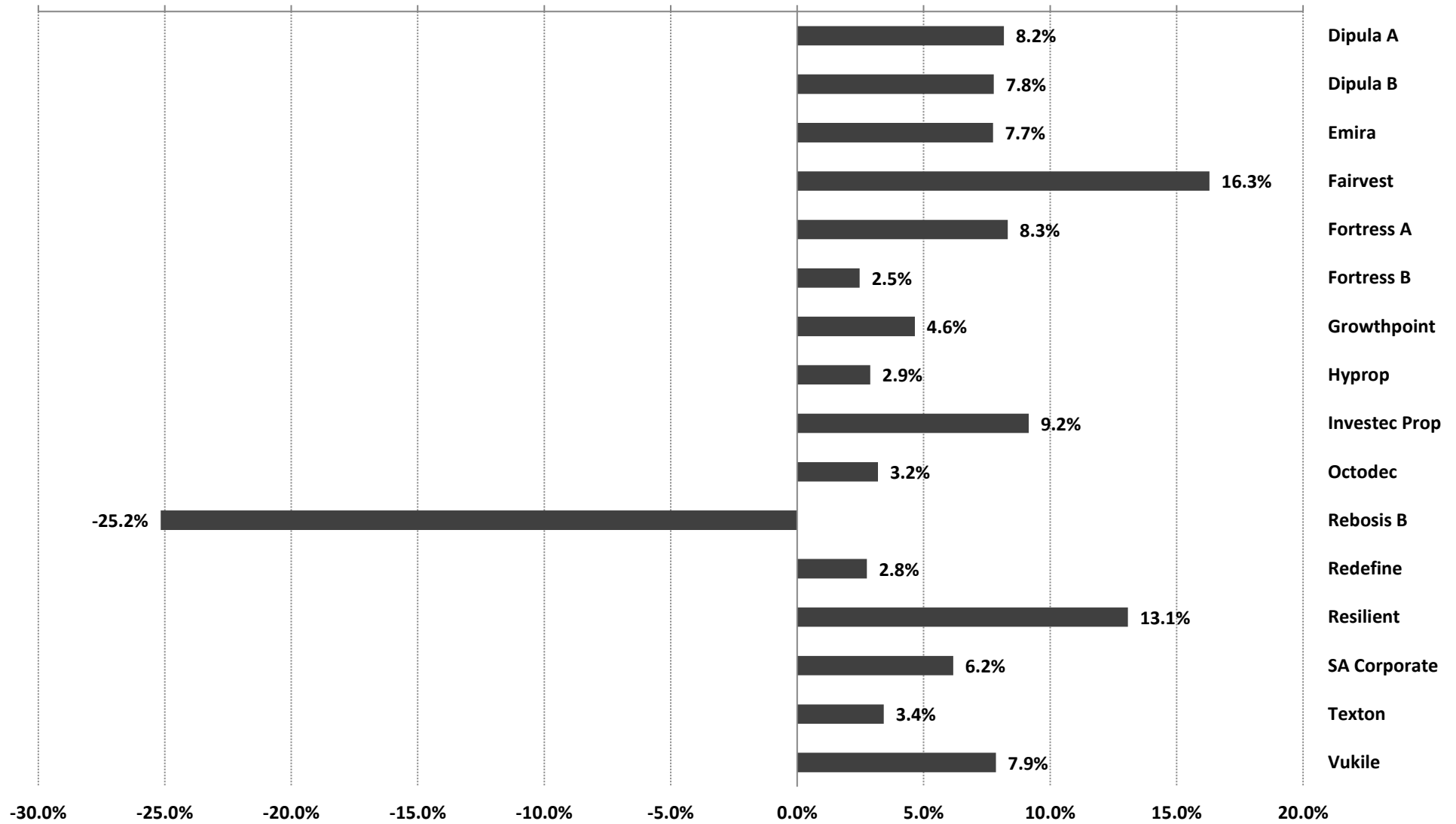
Source: Counterpoint Asset Management

## 5 year annualised performance to 30 November 2021



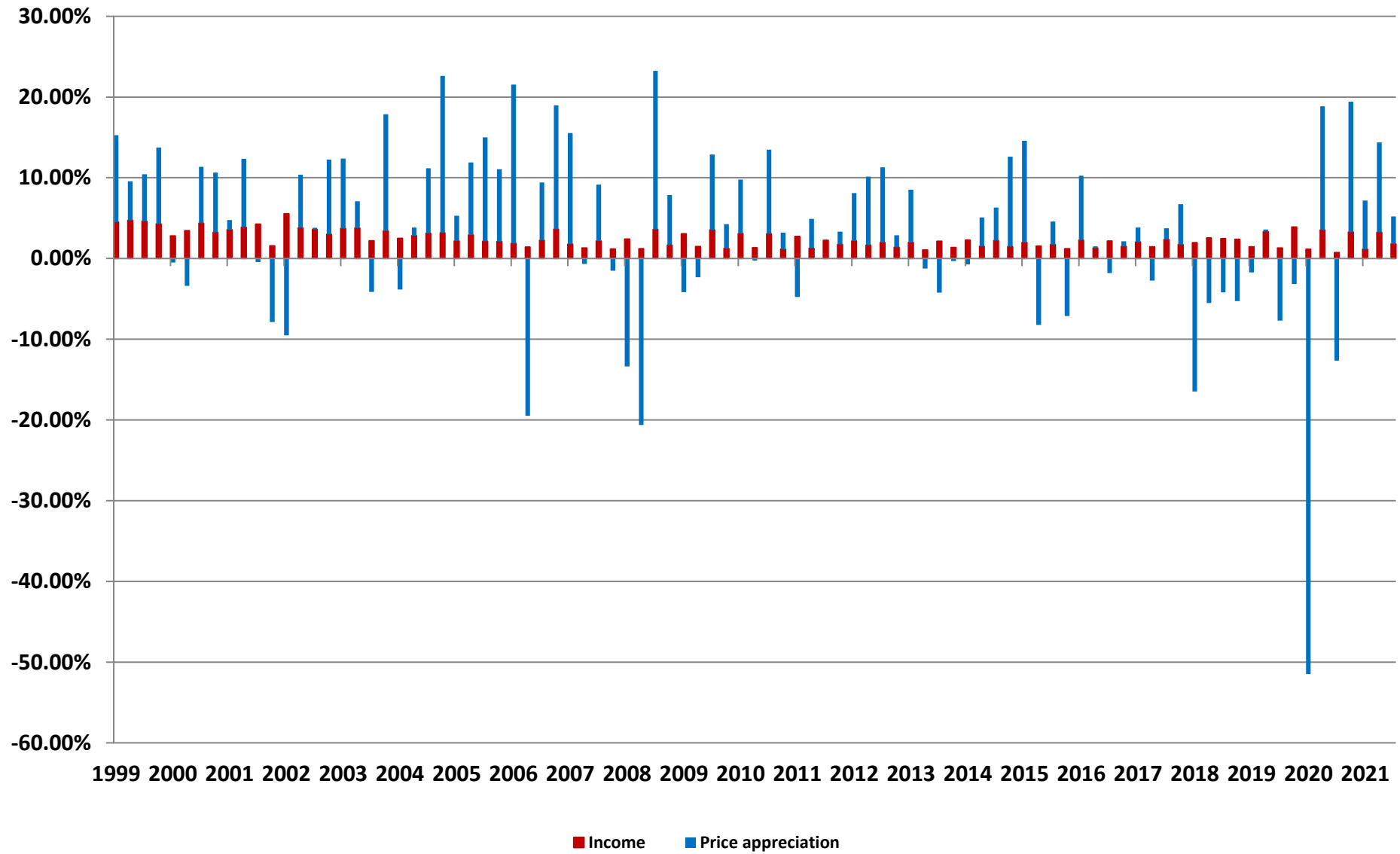
Source: Counterpoint Asset Management

## 10 year annualised performance to 30 November 2021



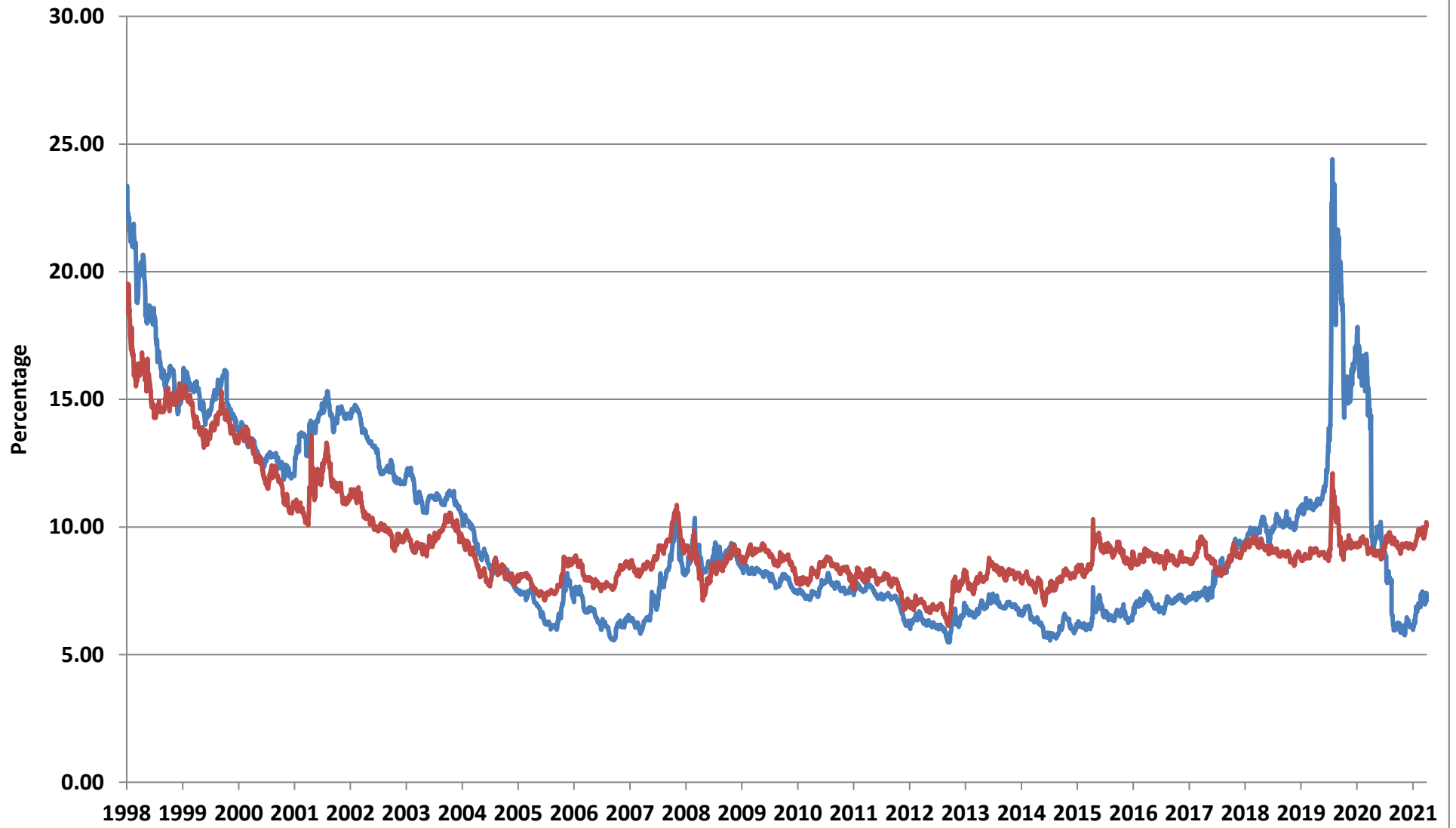
Source: Counterpoint Asset Management

## SA REITs - quarterly return components



Source: Counterpoint Asset Management

## SA REIT Yields versus Bond Yields

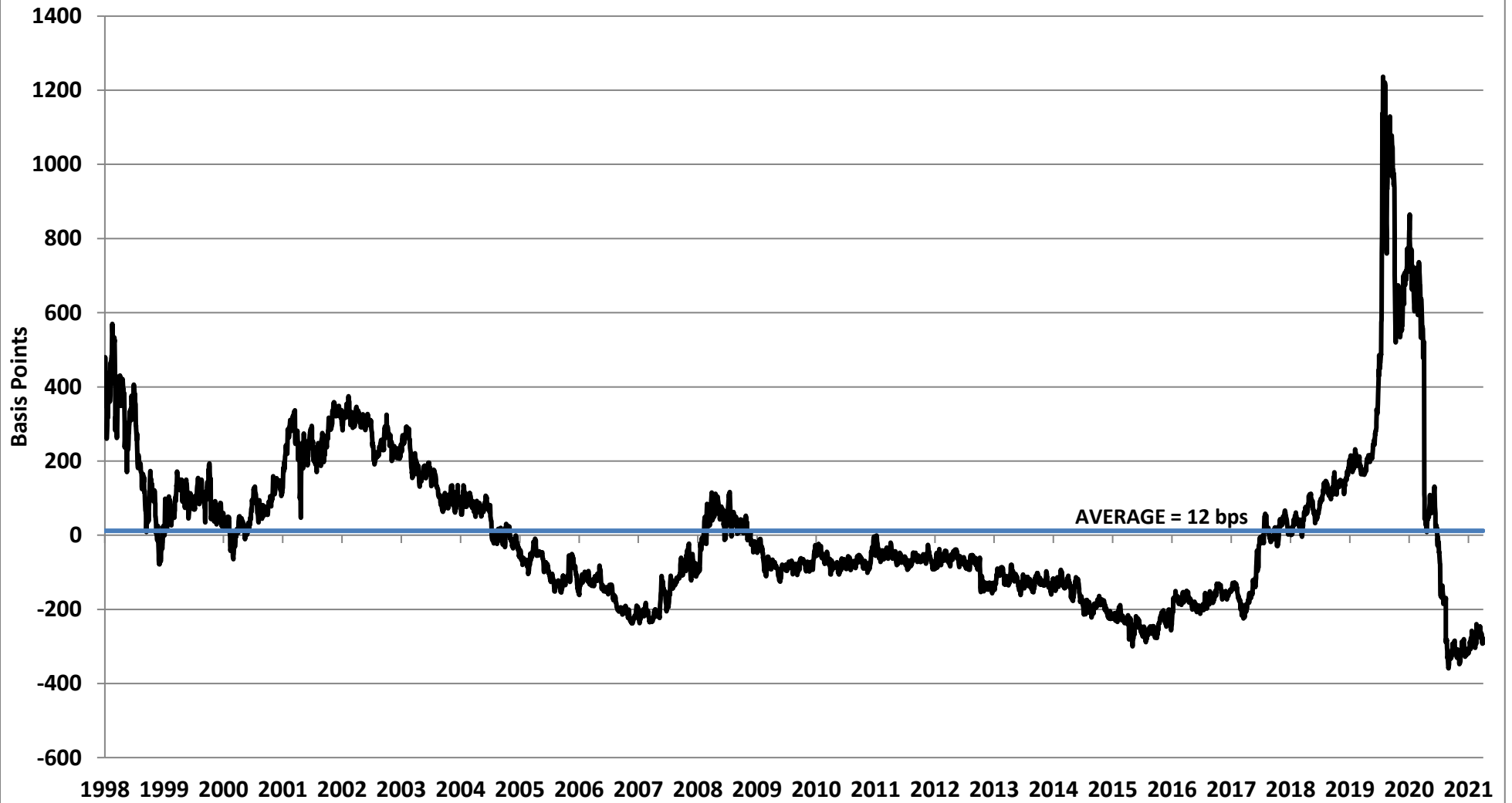


Source: IRESS & Counterpoint Asset Management

— SA Listed Property — Long bond

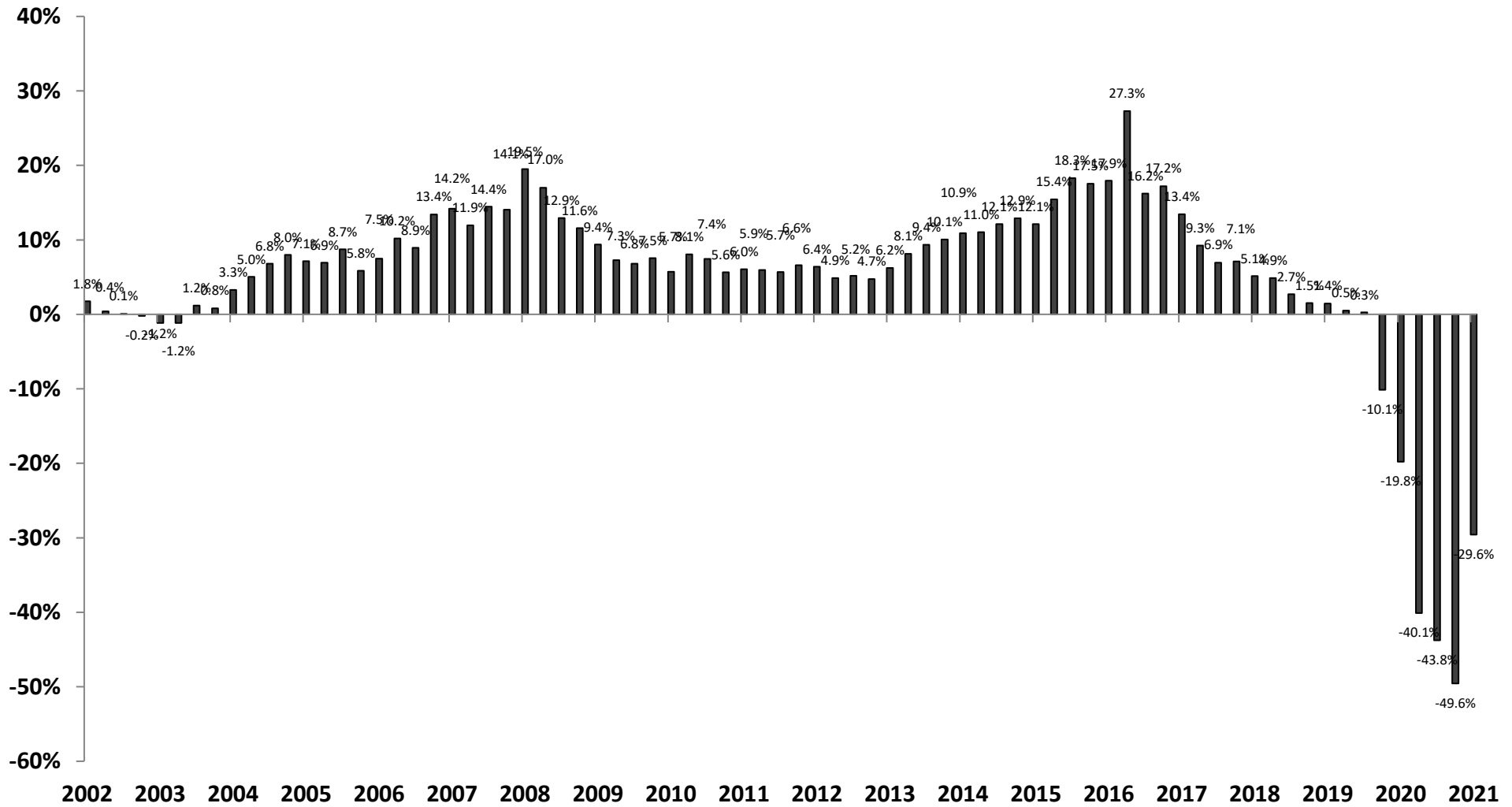
# Yield Differential

## SA REIT Yield minus Long Bond Yield



Source: IRESS & Counterpoint Asset Management

## SA REITs Distribution Growth - Rolling 12 months<sup>1</sup>

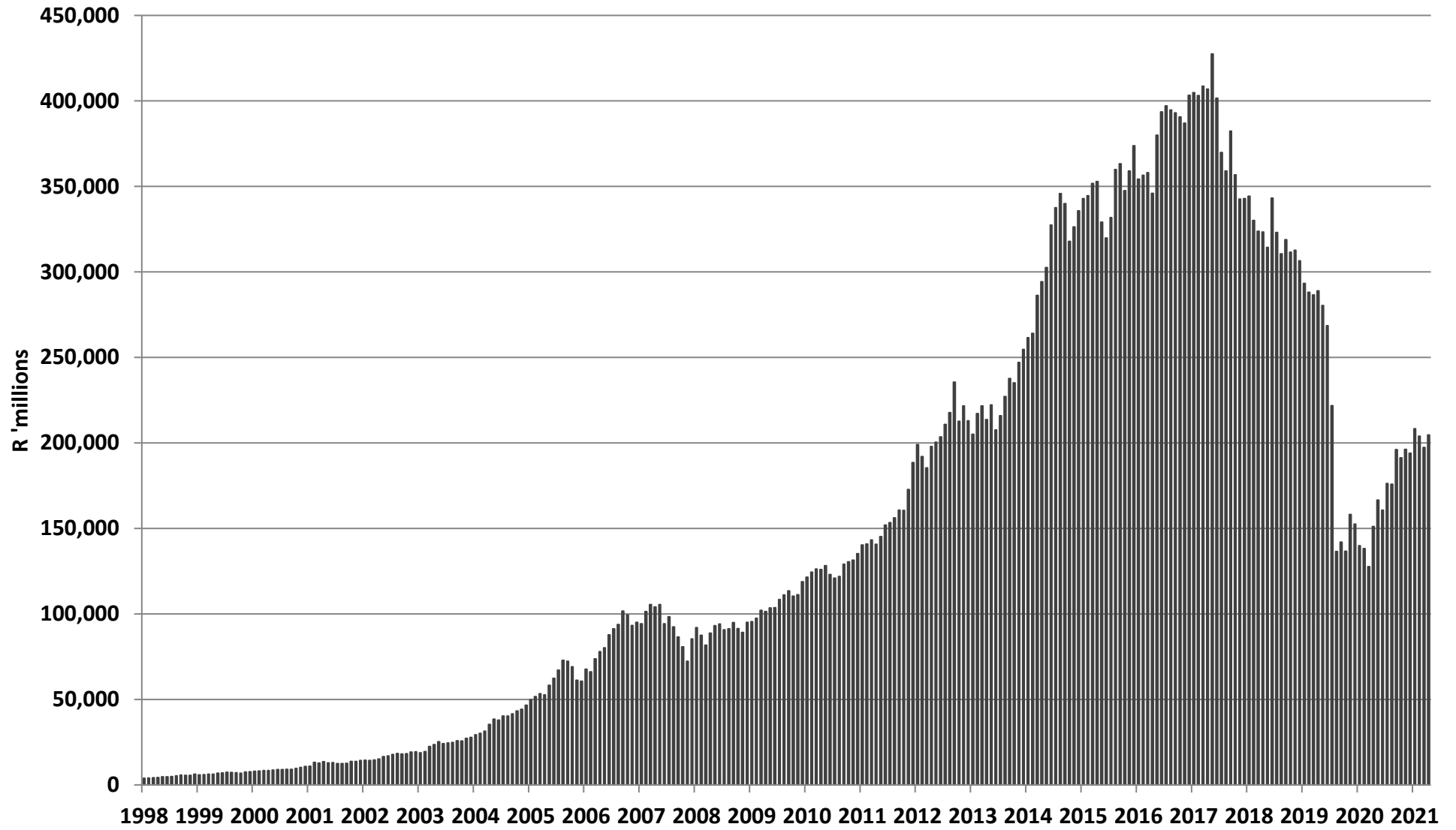


Source: Counterpoint Asset Management

1. Weighted by equity market capitalisation at the end of the period to limit distortions created by significant equity issuance by individual companies

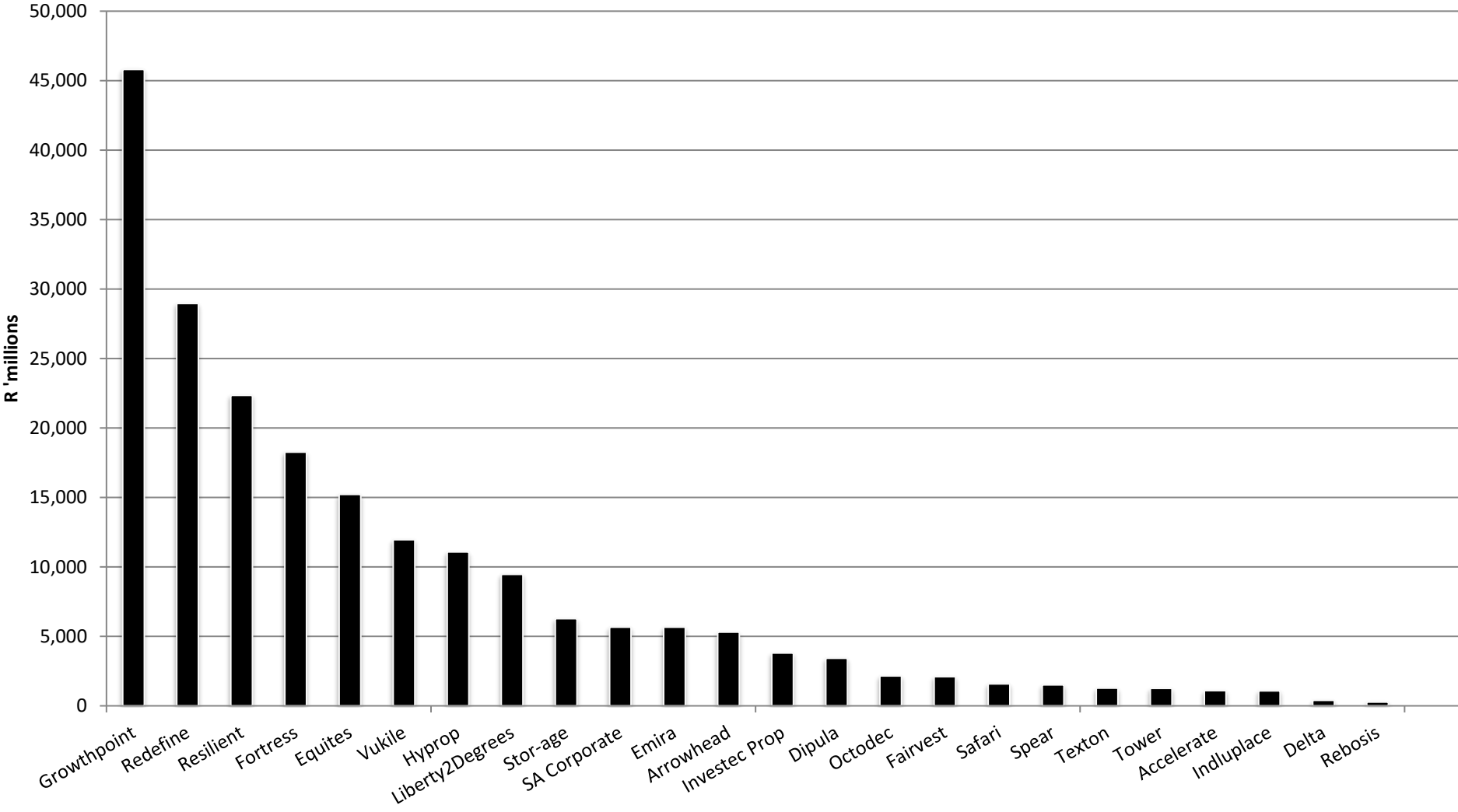


# Market Capitalisation



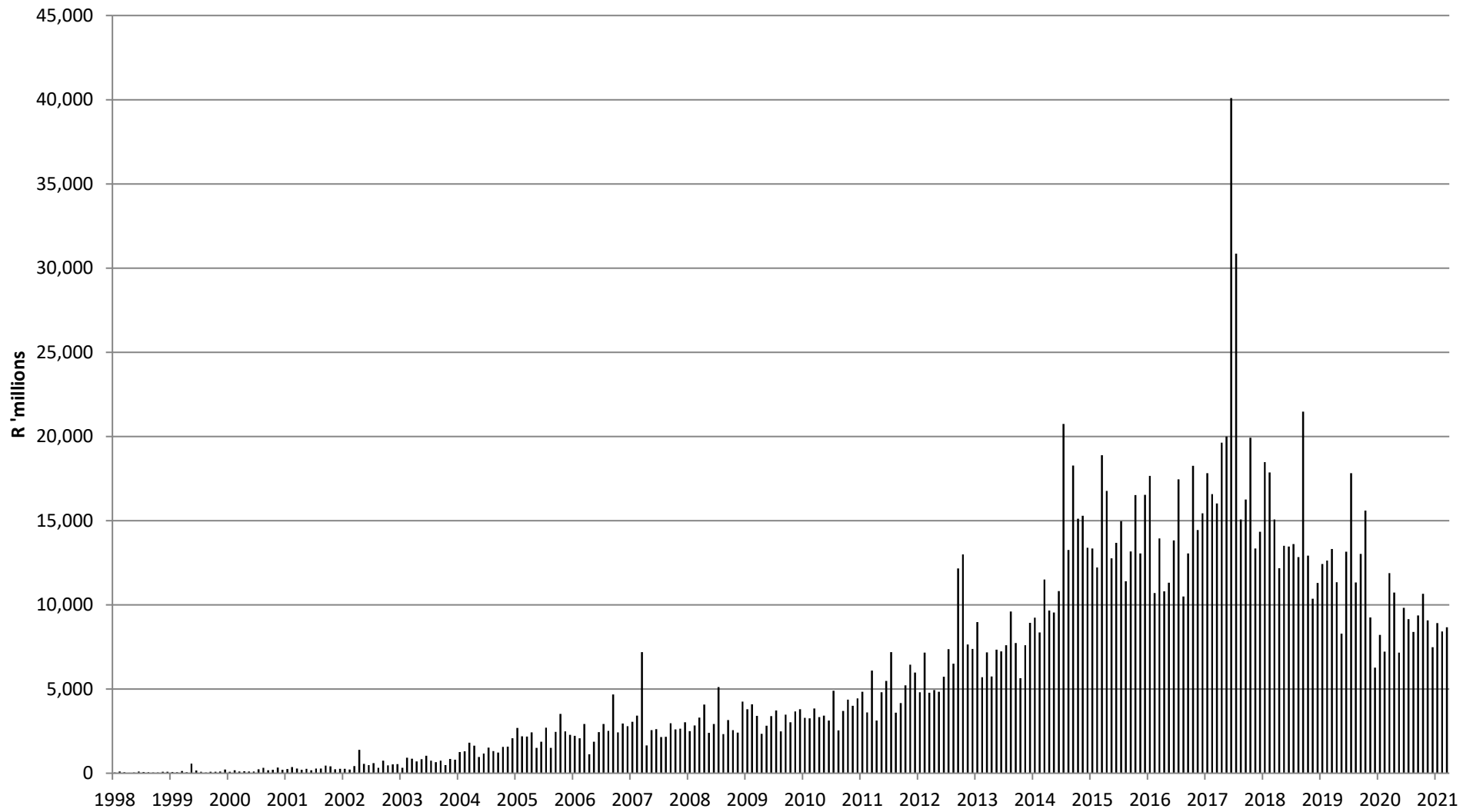
Source: Counterpoint Asset Management

## Market Capitalisation - Publicly Traded SA REITs November 2021



Source: Counterpoint Asset Management

## Monthly value of SA REIT shares traded



Source: IRESS and Counterpoint Asset Management