

SA REIT. ASSOCIATION

MONTHLY CHART BOOK MARCH 2022

Performance table: SA REITs, Equities and Bonds	2
Total return indexes	3
SA REITs Index (price only)	4
Comparative Total Return Investment Correlation	5
SA REITs quarterly return components	6
Monthly performance	7
3 month performance	8
Year-to-date performance	9
12 month performance	10
3 year performance	11
5 year performance	12
10 year performance	13
SA REIT yields vs Long Bond yields	14
Yield differential and average yield differential	15
Distribution growth	16
Market capitalisation	17
Market capitalisation (publicly traded SA REITs)	18
Monthly value of SA REIT units traded	19

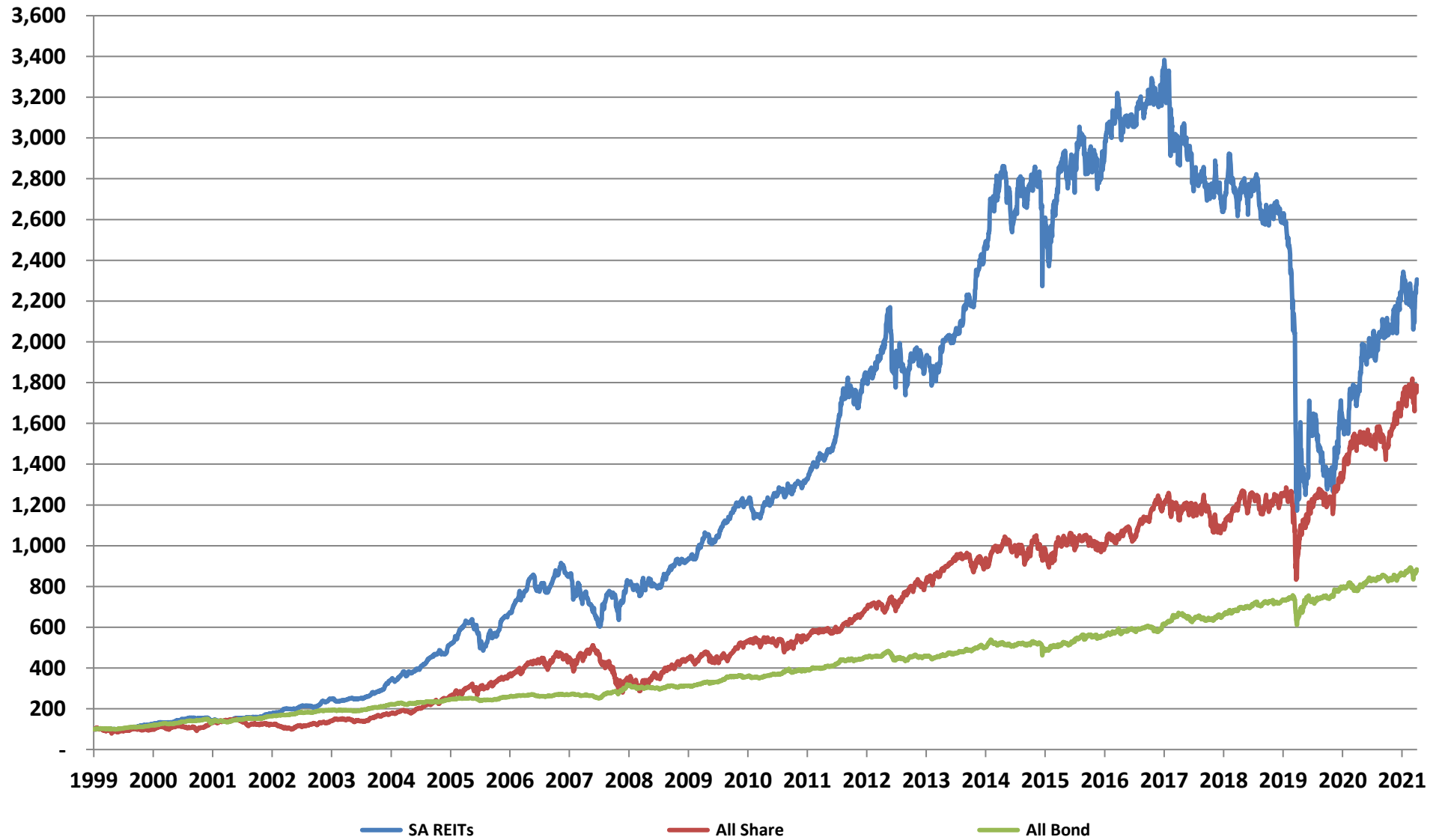
PERFORMANCE

Period	SA REITs ¹	All Share ²	All Bond ²
2012			
Q1	8.1%	6.0%	2.4%
Q2	10.1%	1.0%	5.2%
Q3	11.3%	7.3%	5.0%
Q4	2.9%	10.3%	2.6%
Year	36.3%	26.7%	16.0%
2013			
Q1	8.5%	2.5%	0.9%
Q2	-0.2%	-0.2%	-2.3%
Q3	-2.1%	12.5%	1.9%
Q4	1.0%	5.5%	0.1%
Year	7.2%	21.4%	0.6%
2014			
Q1	1.5%	4.3%	0.9%
Q2	5.1%	7.2%	2.5%
Q3	6.3%	-2.1%	2.2%
Q4	12.6%	1.4%	4.2%
Year	27.7%	10.9%	10.1%
2015			
Q1	14.6%	5.8%	3.0%
Q2	-6.7%	-0.2%	-1.4%
Q3	4.6%	-2.1%	1.1%
Q4	-5.9%	1.7%	-6.4%
Year	5.2%	5.1%	-3.9%
2016			
Q1	10.3%	3.9%	6.6%
Q2	1.5%	0.4%	4.4%
Q3	0.4%	0.5%	3.4%
Q4	2.1%	-2.1%	0.3%
Year	14.7%	2.6%	15.4%
2017			
Q1	3.8%	3.8%	2.5%
Q2	-1.3%	-0.4%	1.5%
Q3	3.8%	8.9%	3.7%
Q4	6.7%	7.4%	2.2%
Year	13.5%	21.0%	10.2%
2018			
Q1	-14.5%	-6.0%	8.1%
Q2	-3.0%	4.5%	-3.8%
Q3	-1.7%	-2.2%	0.8%
Q4	-2.9%	-4.9%	2.8%
Year	-20.8%	-8.5%	7.7%
2019			
Q1	-0.3%	8.0%	3.8%
Q2	3.6%	3.9%	3.7%
Q3	-6.4%	-4.6%	0.8%
Q4	0.7%	4.6%	1.7%
Year	-2.6%	12.0%	10.3%
2020			
Q1	-50.3%	-21.4%	-8.7%
Q2	18.9%	23.2%	9.9%
Q3	-11.9%	0.7%	1.5%
Q4	19.4%	9.8%	6.7%
Year	-37.9%	7.0%	8.7%
2021			
Q1	7.2%	13.1%	-1.7%
Q2	14.4%	0.0%	6.9%
Q3	5.2%	-0.8%	0.4%
Q4	10.1%	15.1%	2.9%
Year	42.0%	29.2%	8.4%
2022			
January	-2.7%	0.9%	0.8%
February	-2.5%	2.9%	0.5%
March	5.7%	0.0%	0.5%
Year-to-date	0.3%	3.8%	1.9%

1) Source = Counterpoint Asset Management (index excludes property developers and non-SA REITs)

2) Source = IRESS

Total return indexes



Source: IRESS & Counterpoint Asset Management

SA REIT Index (price only)



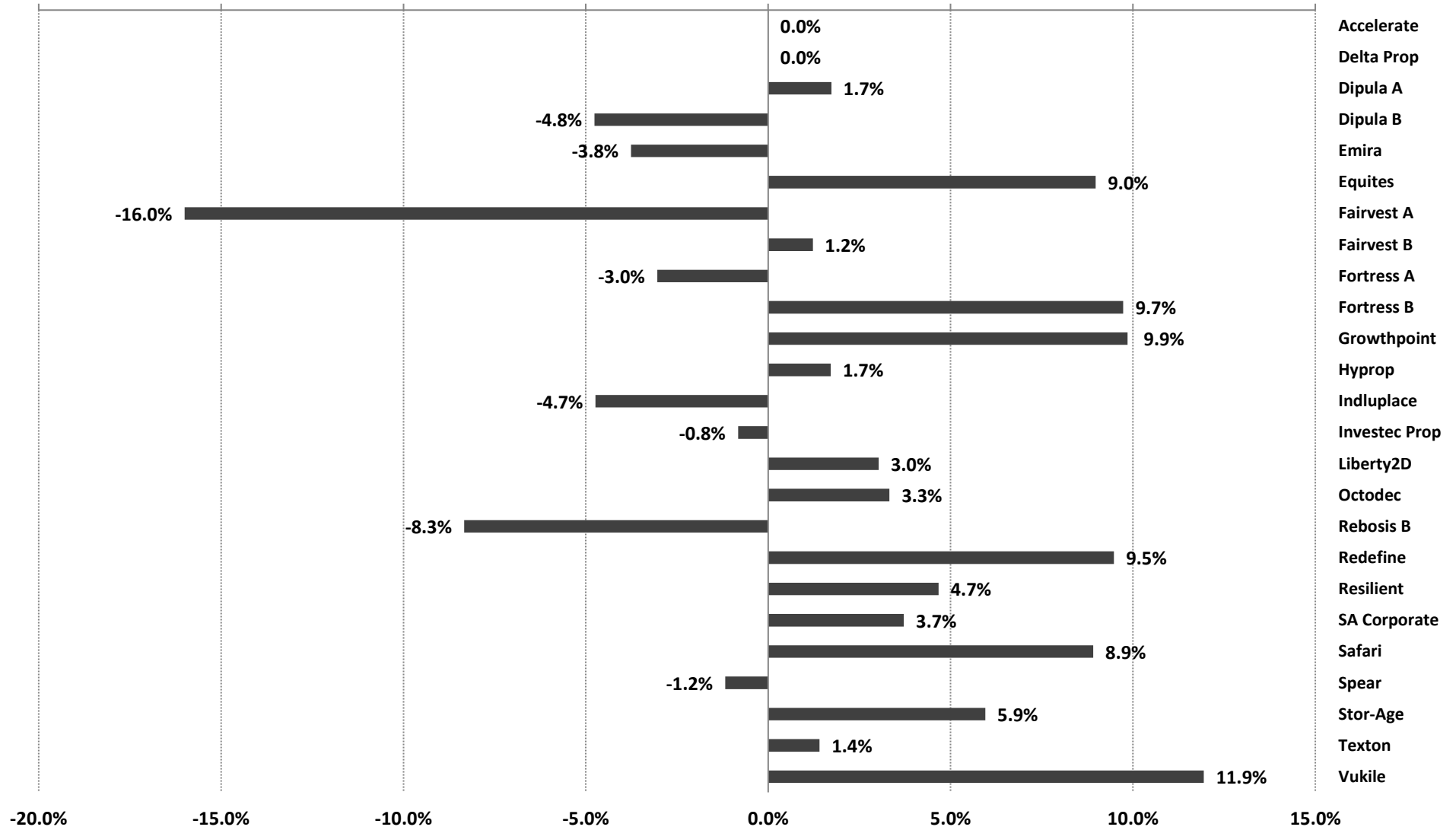
Source: IRESS & Counterpoint Asset Management

Comparative Total Return Investment Correlation

	SA REITs	FTSE/JSE: All Share	All Bond	FTSE/JSE: Financials	FTSE/JSE: Industrials	FTSE/JSE: Top 40	FTSE/JSE: Small Cap
Data period for upper right : March 2012 - March 2022							
SA REITs	1.00	0.49	0.52	0.72	0.61	0.42	0.74
FTSE/JSE: All Share	0.64	1.00	0.23	0.65	0.68	0.94	0.67
All Bond	0.47	0.32	1.00	0.53	0.50	0.23	0.38
FTSE/JSE: Financials	0.77	0.64	0.61	1.00	0.80	0.68	0.81
FTSE/JSE: Industrials	0.67	0.70	0.57	0.79	1.00	0.70	0.75
FTSE/JSE: Top 40	0.59	0.93	0.39	0.70	0.74	1.00	0.64
FTSE/JSE: Small Cap	0.82	0.70	0.42	0.83	0.77	0.68	1.00
Data period for lower left : March 2017 - March 2022							

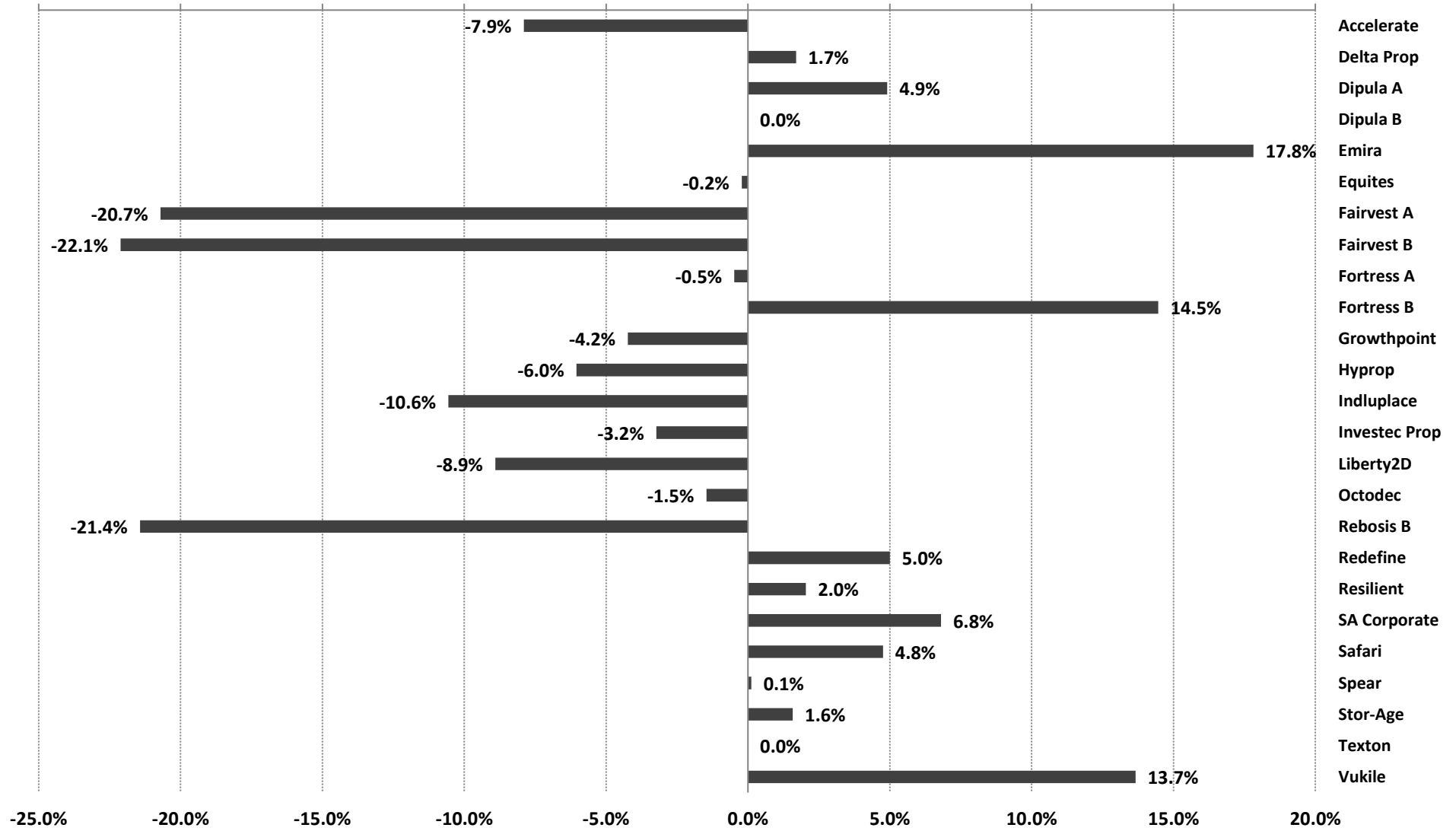
Source: Counterpoint Asset Management

Monthly performance - March 2022



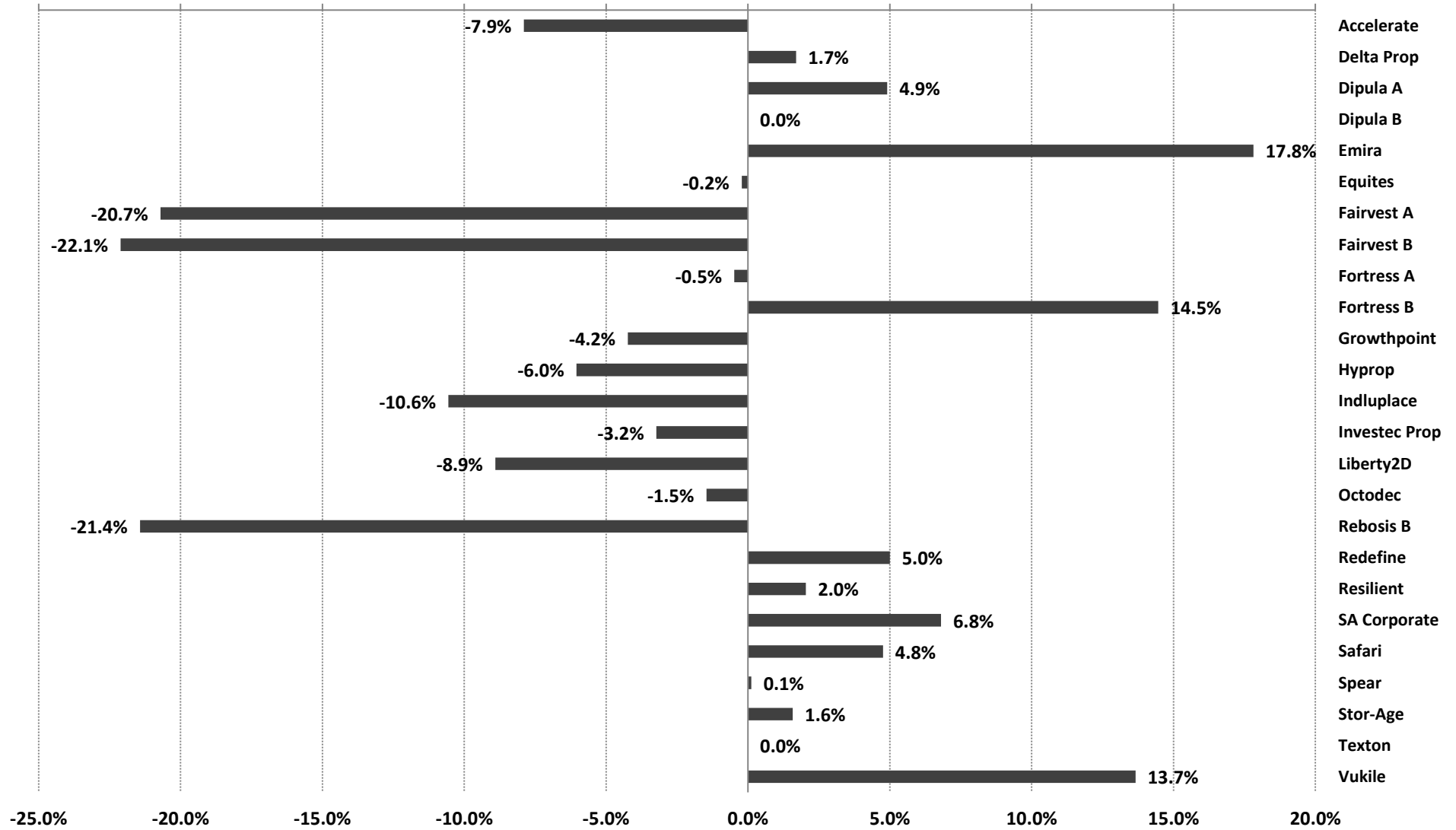
Source: Counterpoint Asset Management

3 month performance to 31 March 2022



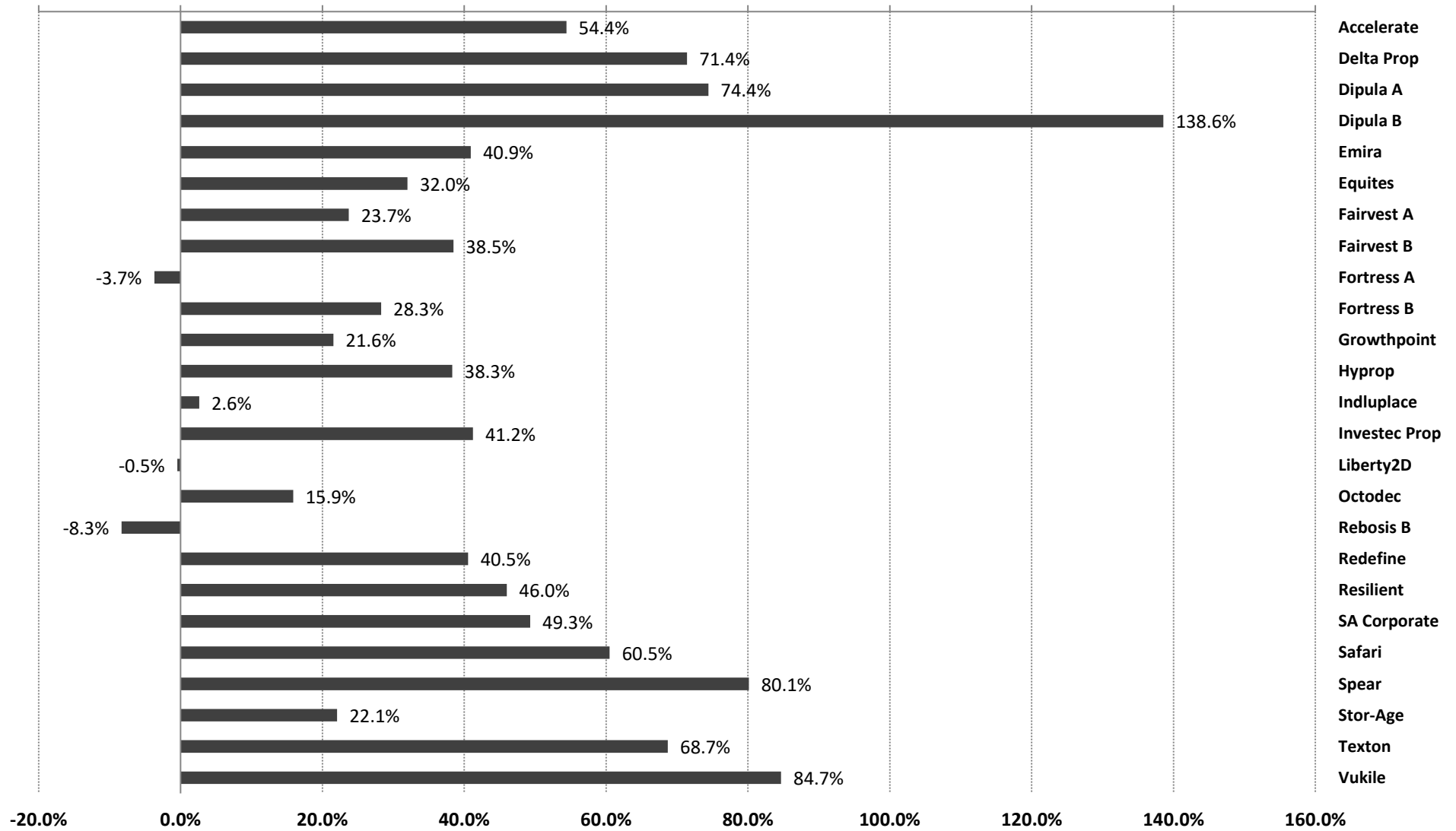
Source: Counterpoint Asset Management

Year-to-date performance to 31 March 2022



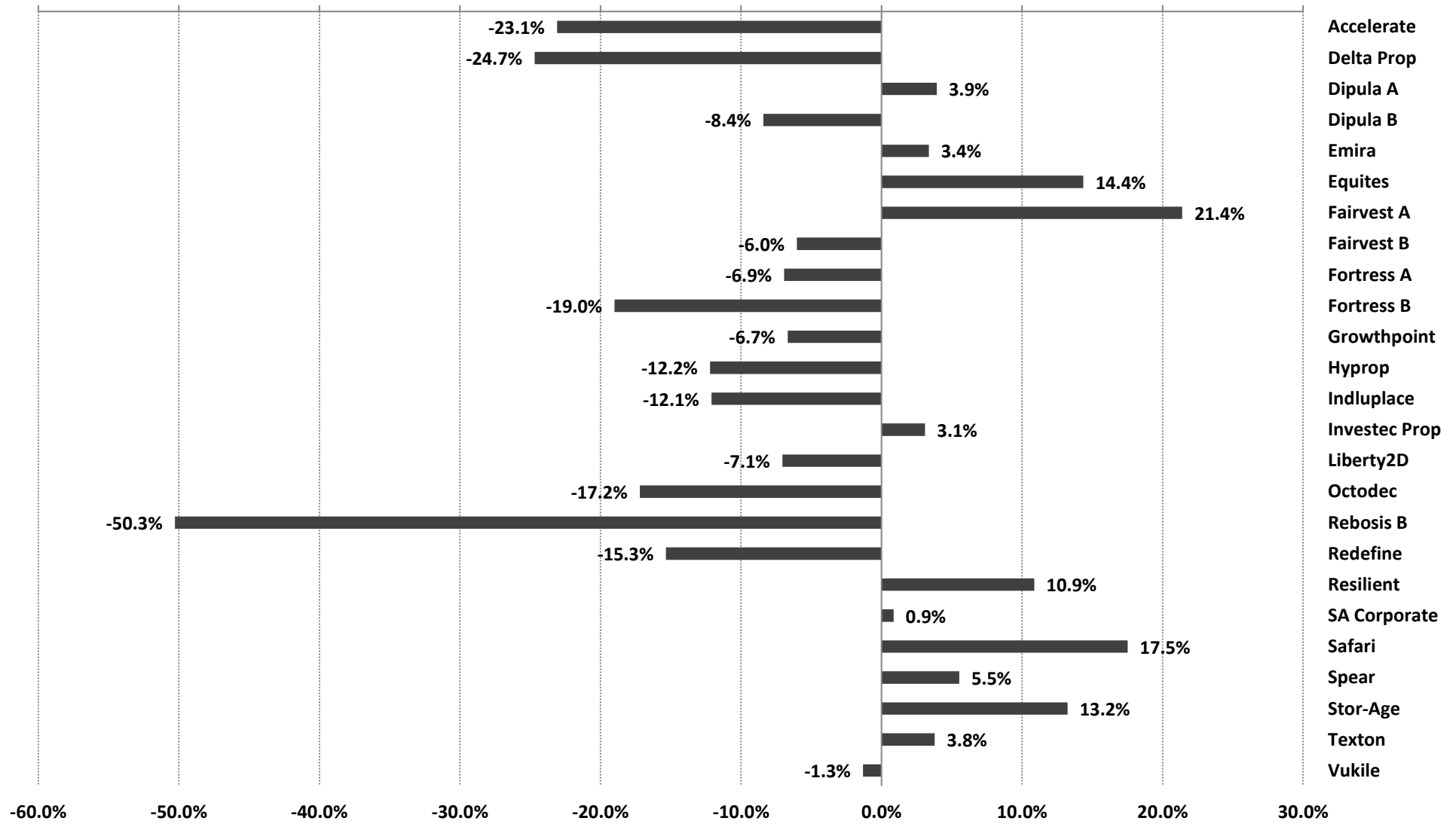
Source: Counterpoint Asset Management

12 month performance to 31 March 2022



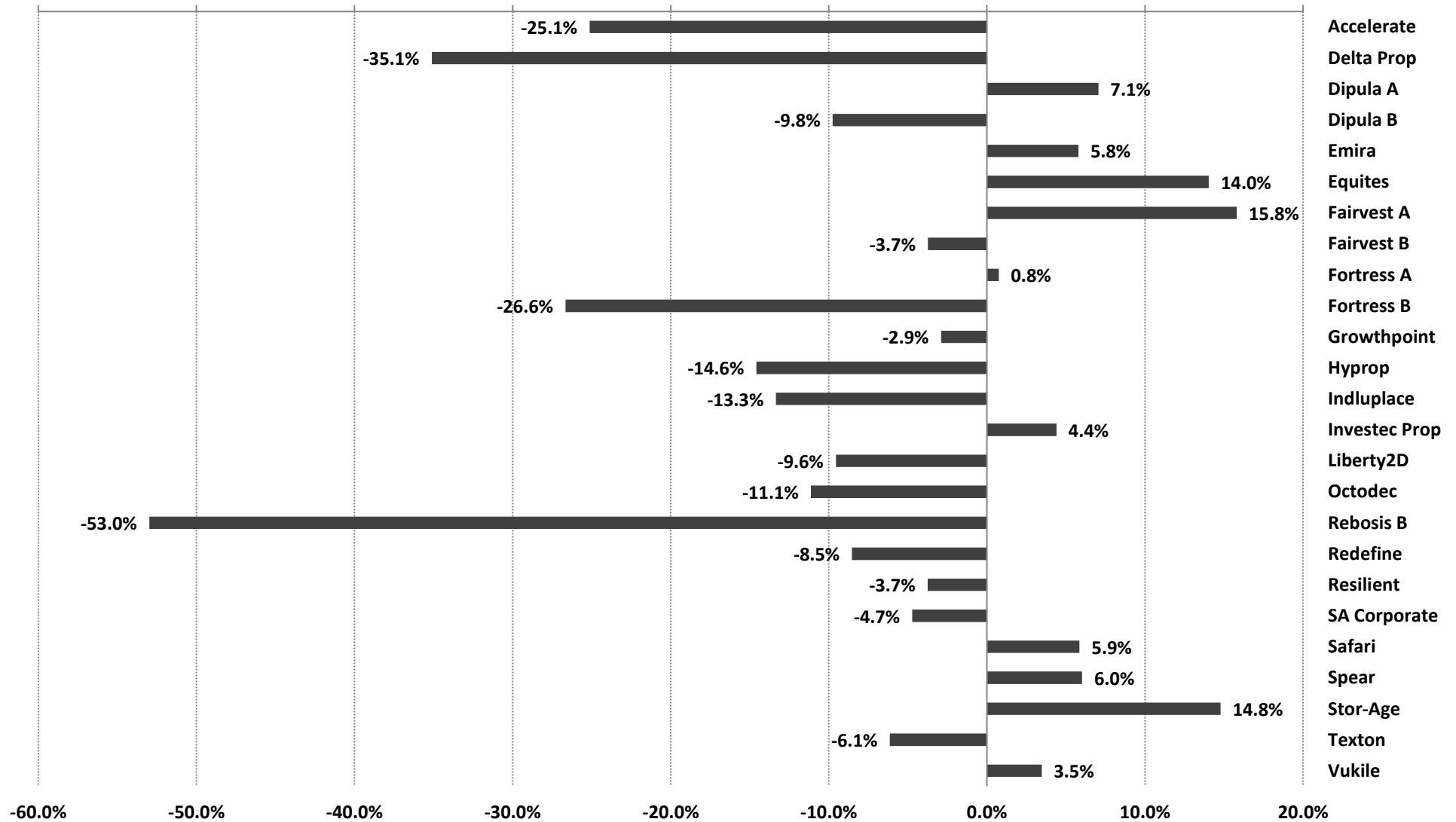
Source: Counterpoint Asset Management

3 year annualised performance to 31 March 2022



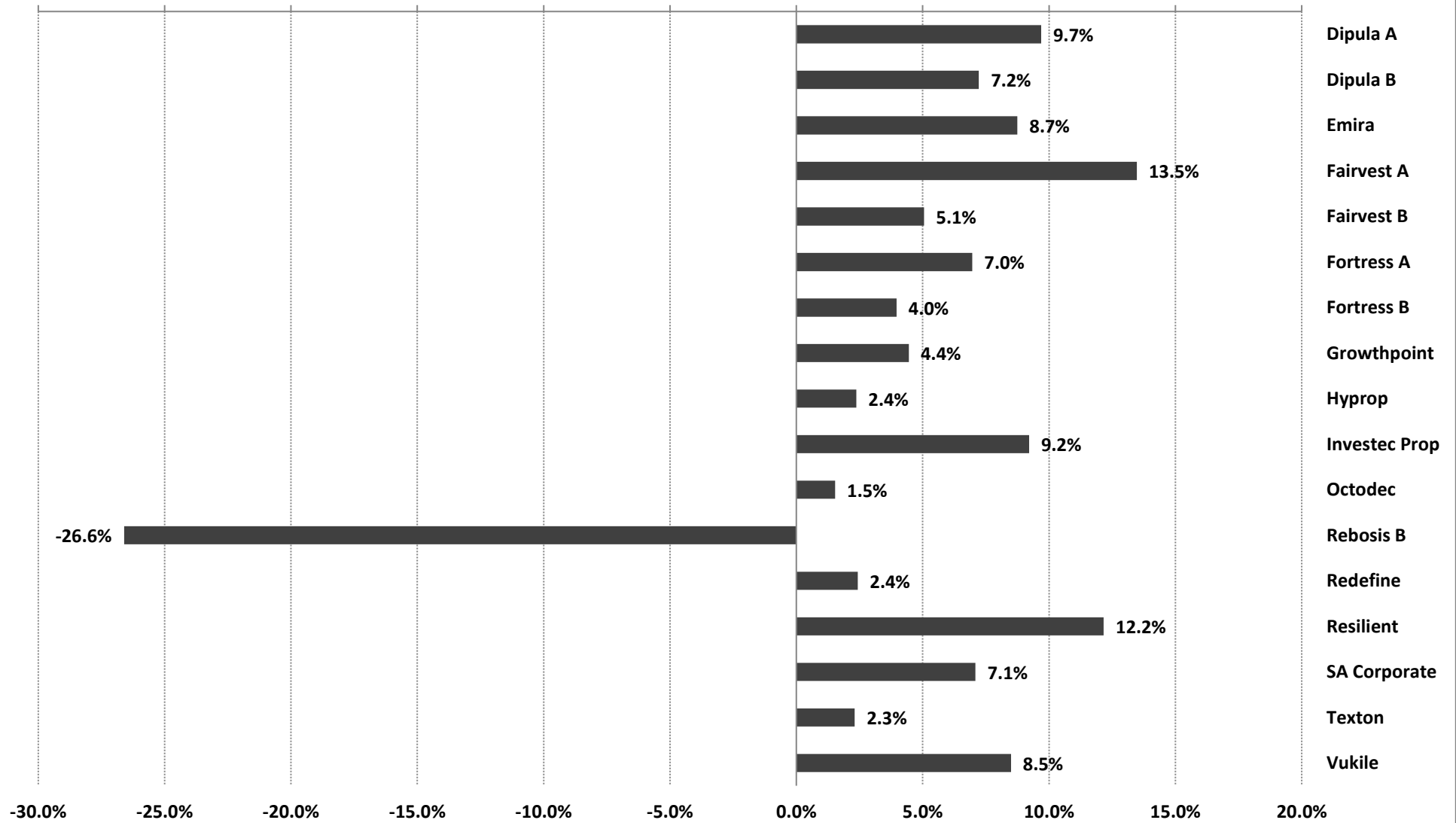
Source: Counterpoint Asset Management

5 year annualised performance to 31 March 2022



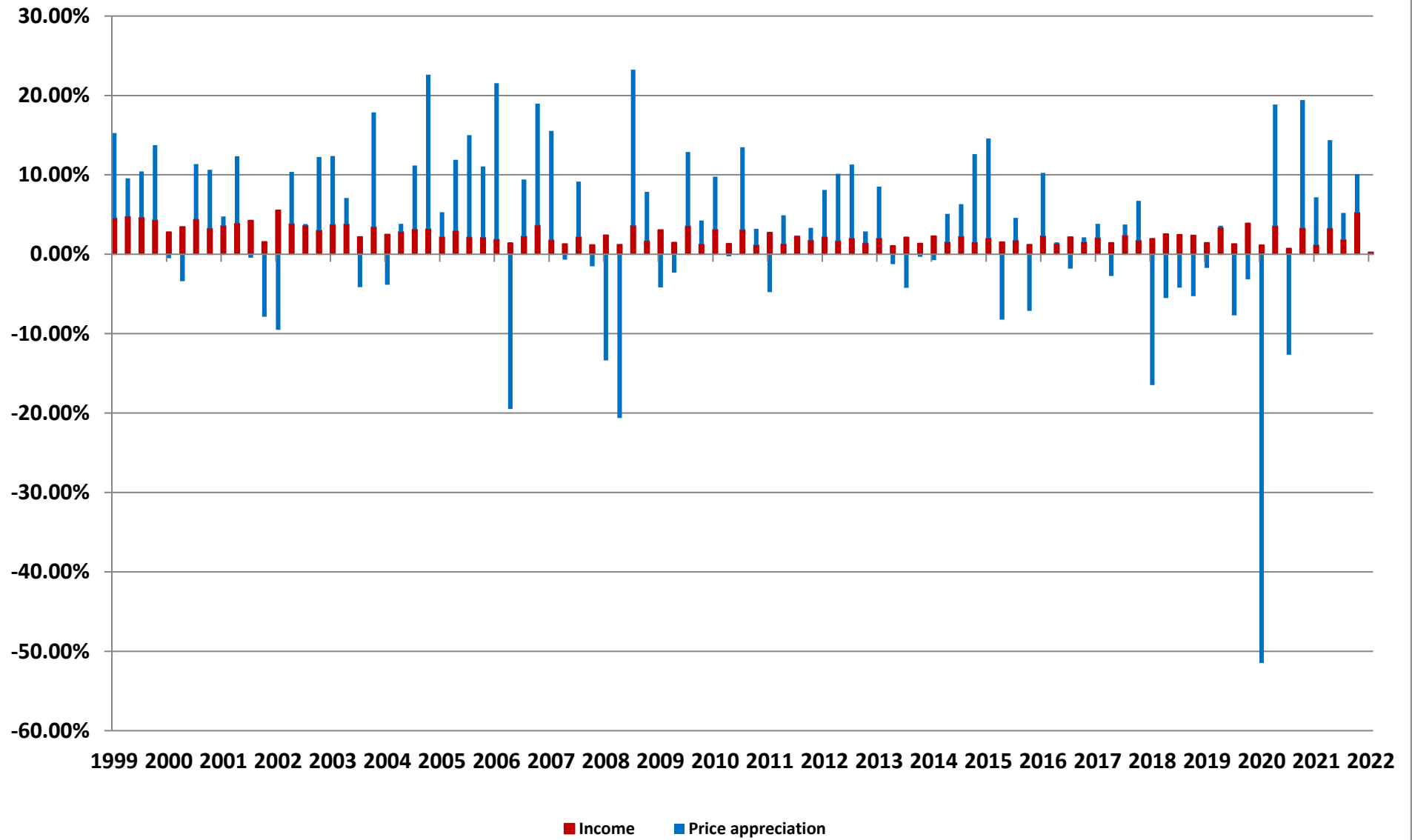
Source: Counterpoint Asset Management

10 year annualised performance to 31 March 2022



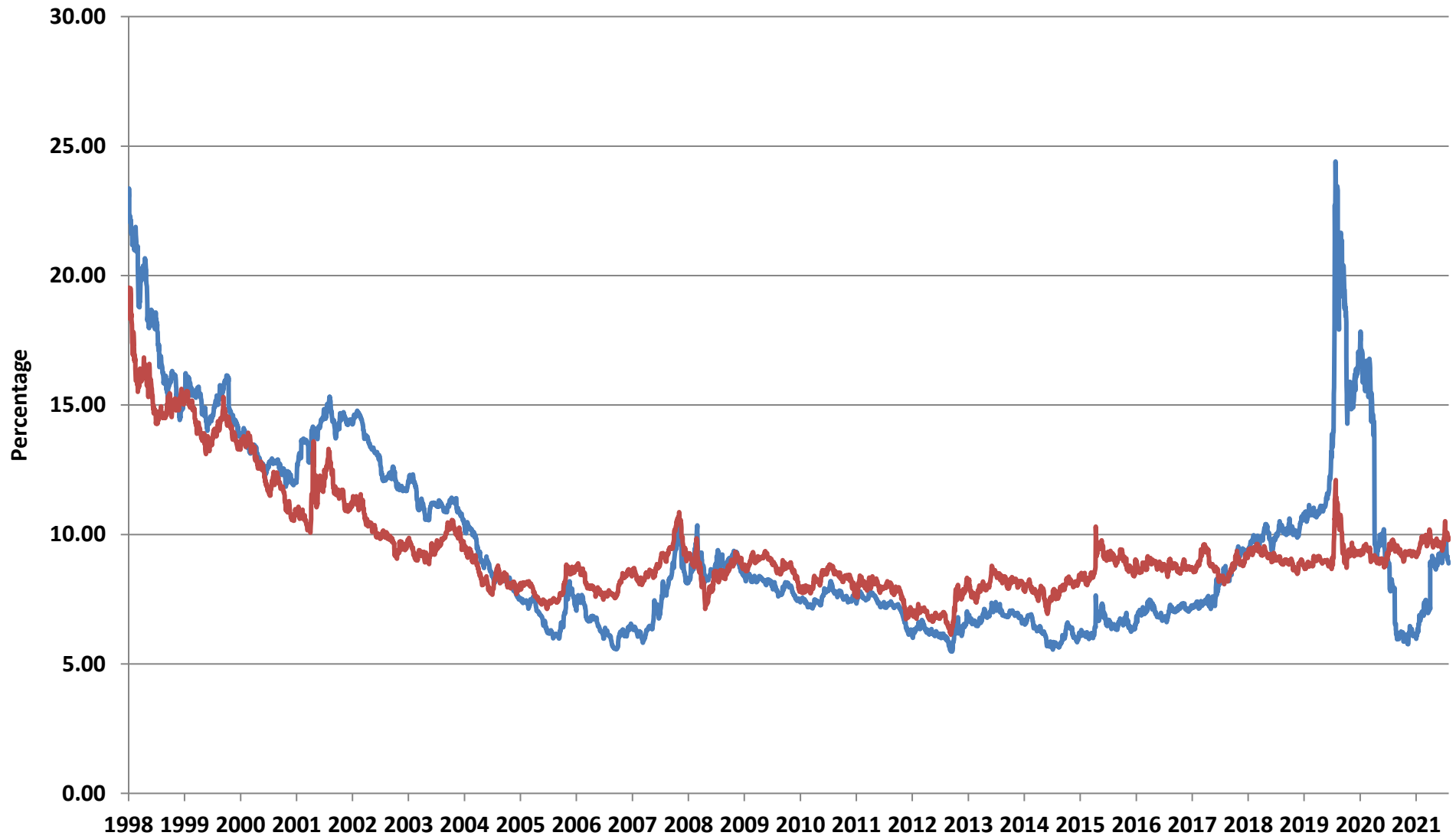
Source: Counterpoint Asset Management

SA REITs - quarterly return components



Source: Counterpoint Asset Management

SA REIT Yields versus Bond Yields

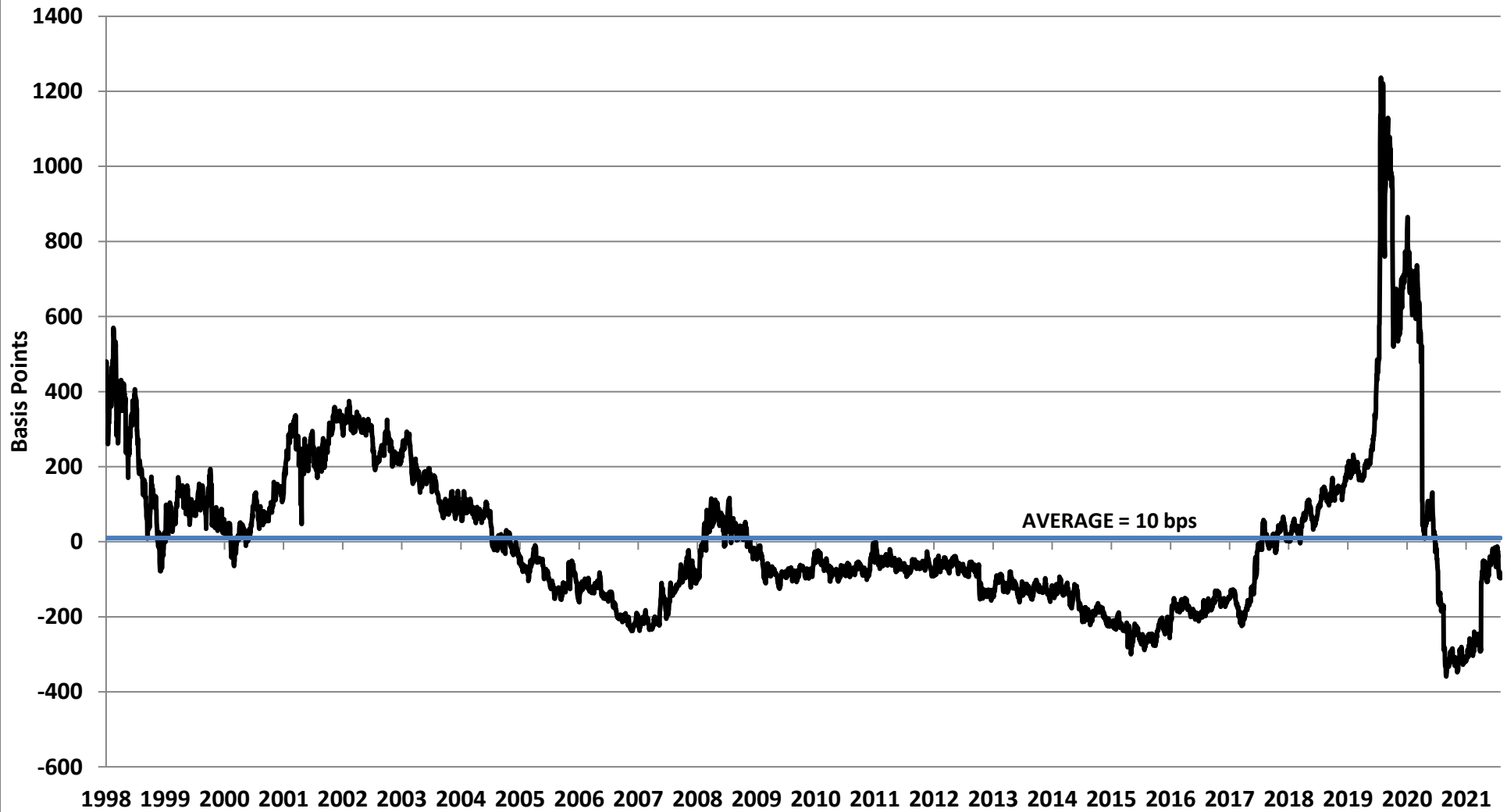


Source: IRESS & Counterpoint Asset Management

— SA Listed Property — Long bond

Yield Differential

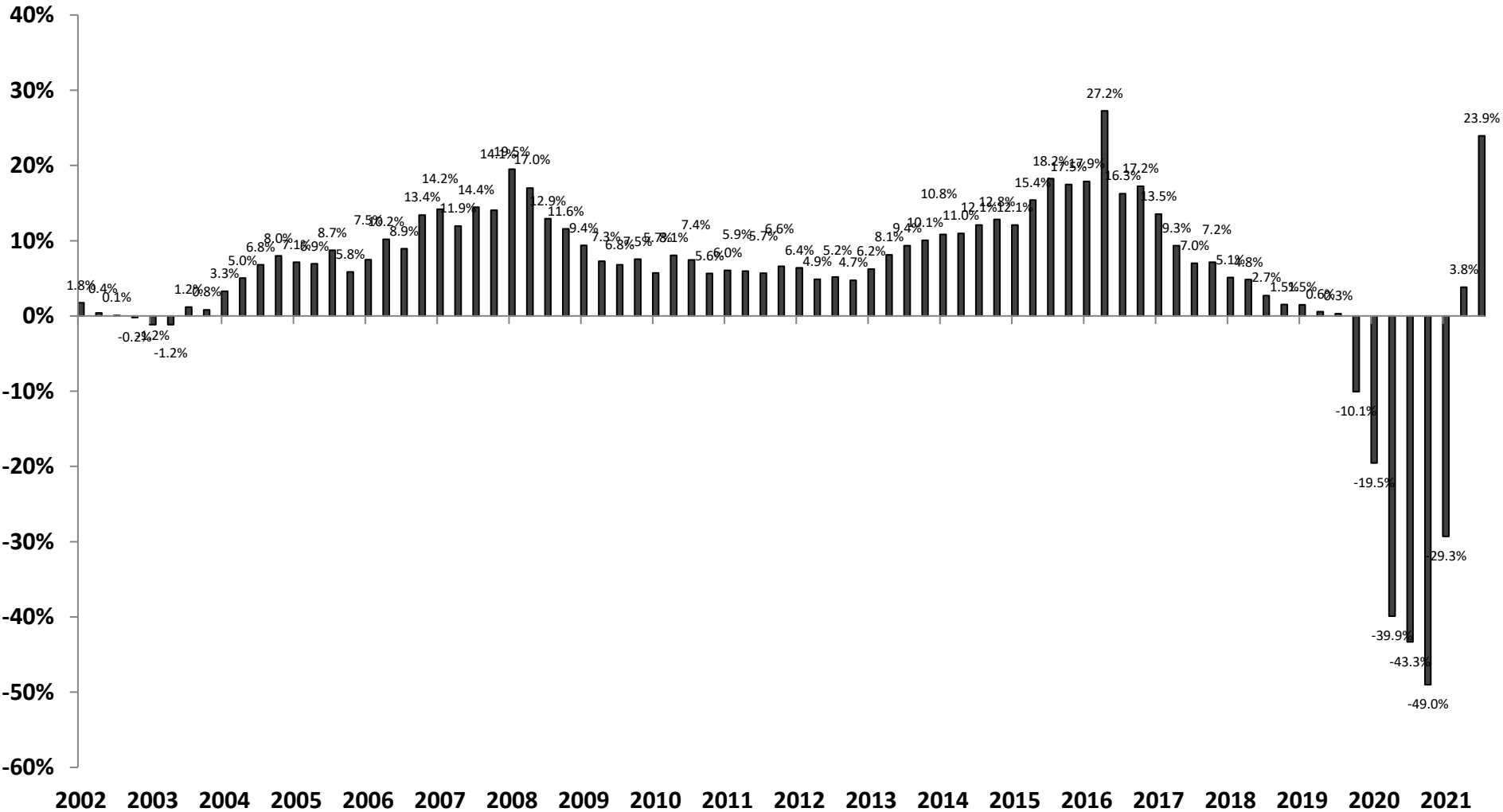
SA REIT Yield minus Long Bond Yield



Source: IRESS & Counterpoint Asset Management

SA REITs

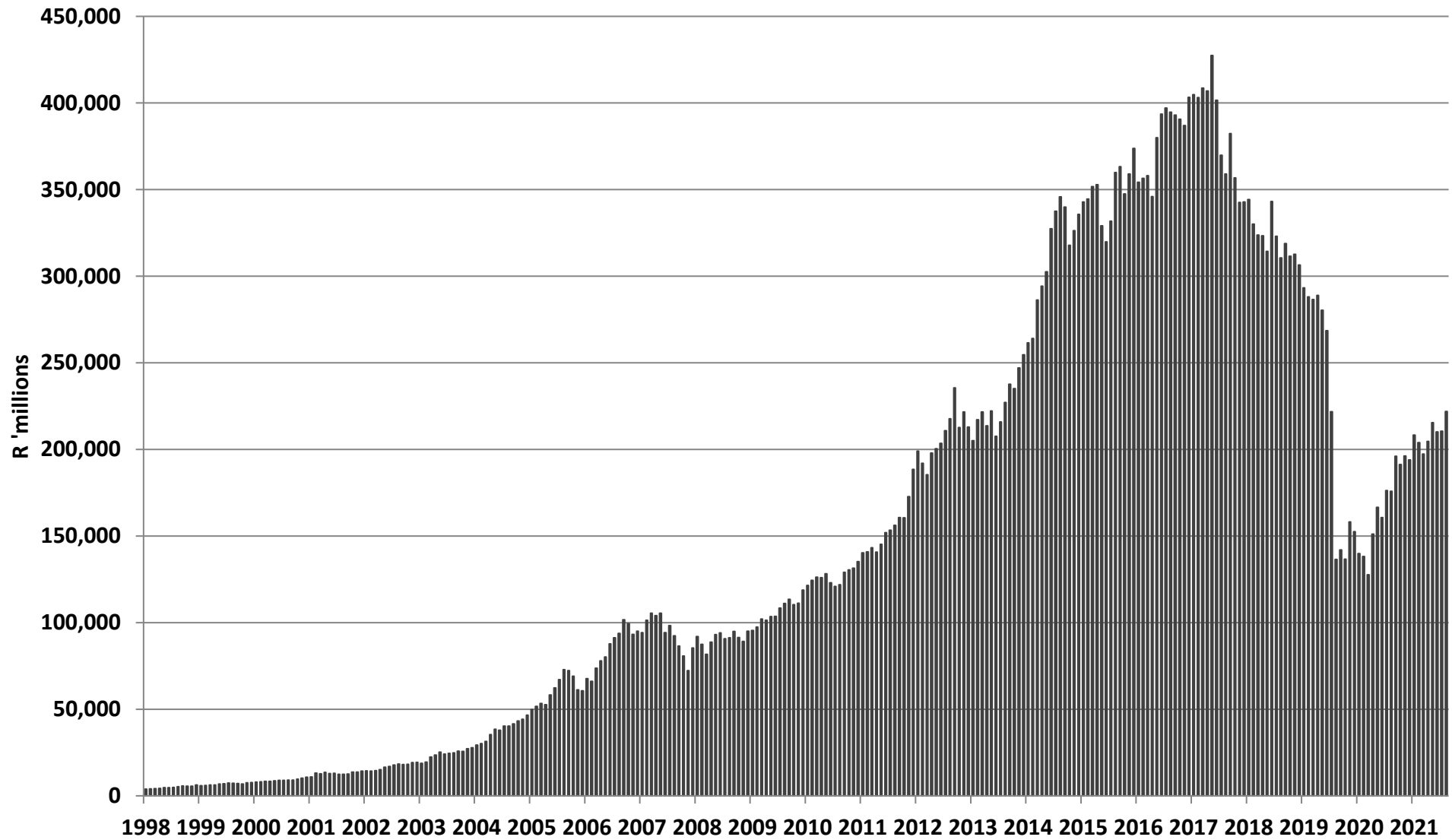
Distribution Growth - Rolling 12 months¹



Source: Counterpoint Asset Management

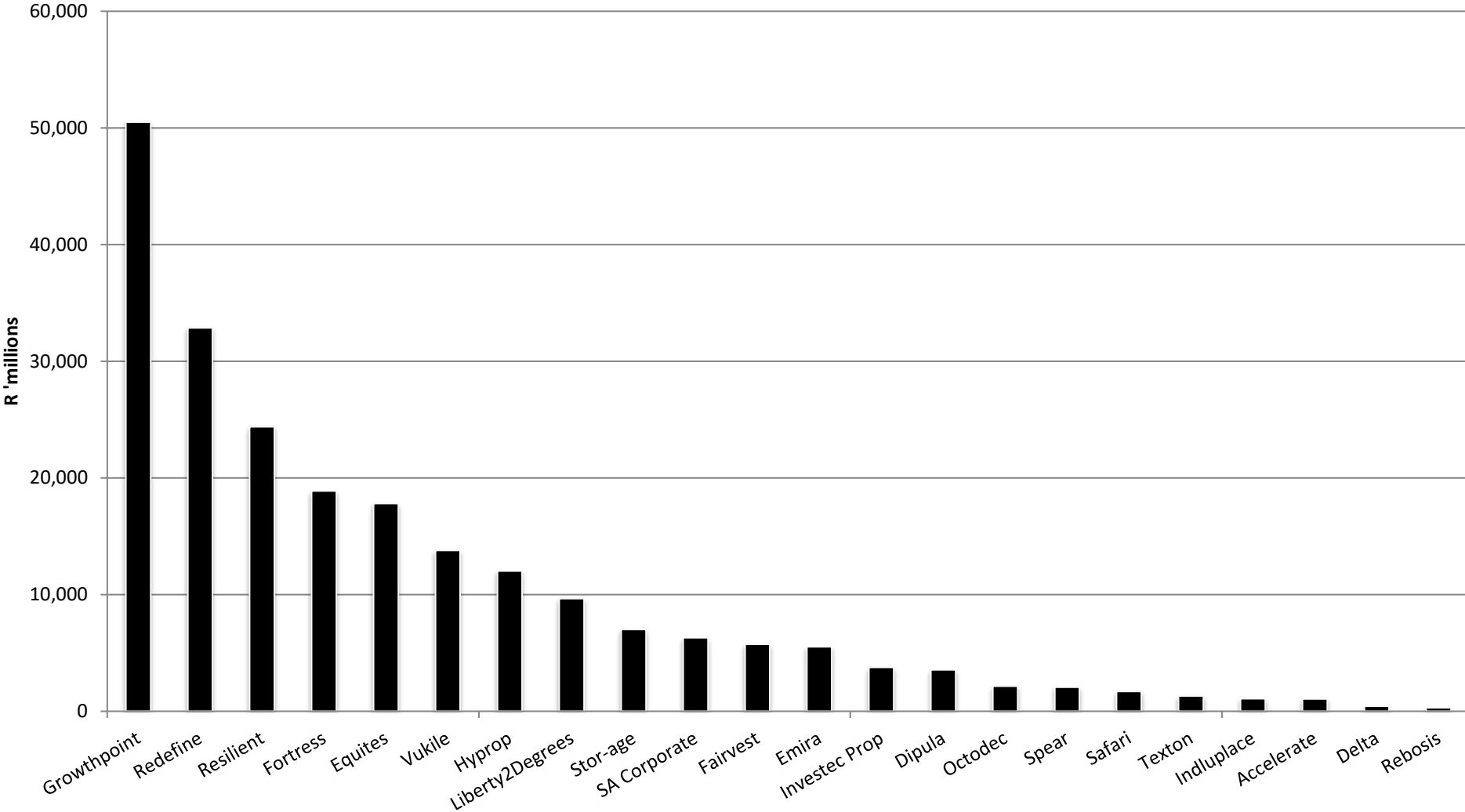
1. Weighted by equity market capitalisation at the end of the period to limit distortions created by significant equity issuance by individual companies

Market Capitalisation



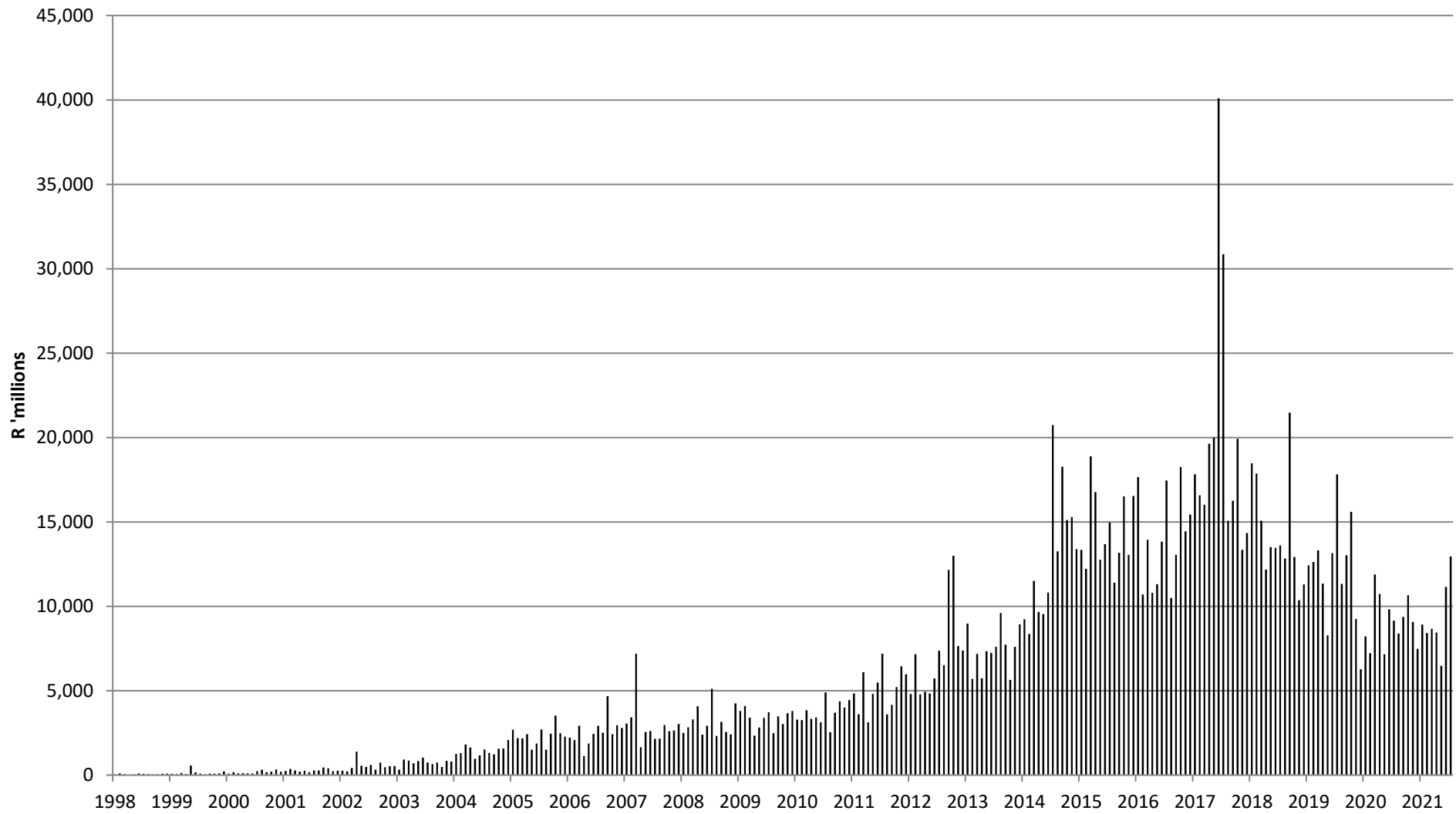
Source: Counterpoint Asset Management

Market Capitalisation - Publicly Traded SA REITs March 2022



Source: Counterpoint Asset Management

Monthly value of SA REIT shares traded



Source: IRESS and Counterpoint Asset Management